



Now more than ever, Westchester needs us.

wjcs

2025
IMPACT
REPORT



WJCS teamed up with Shames JCC on the Hudson and offered neurodivergent individuals an empowering 12-week Fitness and Cooking Program.



Thanks to our dedicated volunteers, our 2025 Back-to-School Drive was record-breaking! Hundreds of children from under-resourced communities in Westchester started the school year with the supplies – and confidence – they need to succeed thanks to our generous supporters.



Children and their families celebrated the completion of their participation in the high-impact ParentChild+ program, which promotes social-emotional learning and early literacy.



Members of our WJCS POINT program performed in Seussical the Musical to a packed audience at the Play Group Theatre in White Plains after seven months of rehearsals. As always, their annual Theater for Action Show was delightfully entertaining.

Dear Friends,

Across Westchester, the needs of our community continue to grow in complexity and urgency. Individuals and families are facing rising mental health challenges, economic pressures, social isolation, food insecurity, trauma, and uncertainty about the future. At the same time, they are looking for connection, stability, and compassionate support.

In moments like these, the work of Westchester Jewish Community Services takes on even greater meaning. Every day, WJCS staff meet people where they are with expertise, dignity, and care. Whether supporting a child struggling in school, helping an older adult remain connected and nourished, providing trauma treatment, assisting individuals with developmental disabilities in building independence, or responding to families in crisis, our mission remains rooted in strengthening the well-being of the entire community.

This Impact Report reflects the breadth of that work and the many ways WJCS continues to respond to evolving needs across Westchester County. It also reflects the importance of *partnership*. Our collaboration with schools, healthcare providers, municipalities, synagogues, community organizations, and supporters allows us to reach more people and provide more coordinated care. This year's growing alliance with Family Service Society of Yonkers is one example of how working together can expand impact and deepen community support.

We are deeply grateful to the many individuals, foundations, corporations, and government partners who make this work possible. Your support allows WJCS not only to sustain critical

services, but also to respond thoughtfully and creatively as new challenges emerge. At a time when many non-profit organizations are being asked to do more amid increasing financial and operational pressures, your partnership is invaluable.

As you read the accomplishments highlighted in this report, we hope you will see the extraordinary strength that comes from a community committed to caring for one another.

Now more than ever, the work WJCS matters deeply to the people we serve. And now more than ever, we are grateful for and dependent upon the support of those who believe in our mission. Together, we can continue to ensure that individuals and families across Westchester have access to the care, support, and hope they deserve.

With gratitude,



SETH DIAMOND
Chief Executive Officer
Westchester Jewish
Community Services



WILLIAM SHIRLEY
President, Board of Directors
Westchester Jewish
Community Services

PRESIDENT

William Shirley

Joel Beckman
Froma B. Benerofe
Sherry Birnbaum

Carol Richards Mermey

Linda Plattus
Suzi Randolph

Aaron W. Davis
Herbert Fischgrund
Bruce M. Freyer
Stuart B. Glover

Robert M. Stavis
Judy Tenney
Chester I. Thomson
Kenneth Weiser
Robert L. Wolfe

VICE PRESIDENTS

Steven Beckman
Barry Kaplan

Mariquita Blumberg
Ron Chaimowitz
Carol H. Corbin
Mindy Feldman

Neil T. Rimsky
Nina Ross
Shirley Shwiel
Henry Wilson

Harold D. Goldsmith
Jack Gross
Philip Halper
Barry Kaplan

TREASURER

Adrian Schwartz

Meira Fleisch
Bruce M. Freyer
Allison Friedland

**Past Presidents
1943-2024**

Michel Araten
Alan R. Batkin
Froma B. Benerofe
Mariquita Blumberg
Edward N. Bratter
Carol Corbin

Peggy Moses
Stanley Roth
David G. Sacks
Neil Sandler
Elizabeth Schoenberger
Samuel J. Schur
Erwin Schwartz
Maida S. Silver
Frank J. Spitalny

**HONORARY
MEMBERS**

Alan R. Batkin
Jane M. Batkin
Liz Jaffe
Maida Silver
Cecile D. Singer
Frank Spitalny
Robert Stavis

SECRETARY

Julian Gomez

Hon. Hal B. Greenwald
Dean Howell
Jedediah Ilany
Sarah Kayle
Laura Kleinhandler
Bob Mensch

DIRECTORS

David A. Alpert
Lynn Bagliebter

NOW MORE THAN EVER

Now more than ever, individuals and families across Westchester are confronting profound challenges—poverty, aging, antisemitism, disabilities, trauma, mental health struggles, and loneliness. Every day, people turn to Westchester Jewish Community Services (WJCS) for compassionate, state-of-the-art care and support. Families turn to WJCS for mental health care, trauma treatment, crisis intervention, educational guidance, substance use services, and community connection. For thousands of children, teens, adults, and seniors, WJCS programs are not simply helpful—they are life-changing.

Now more than ever, we must nurture healthy child development, support trauma and crime victims as they rebuild resilience, help seniors overcome isolation, create meaningful community for people with disabilities, and ensure LGBTQ+ youth know they are seen, valued, and safe. Throughout 2025, WJCS responded to the evolving needs of Westchester residents with urgency, innovation, and compassion.

Expanding Behavioral Health Services

WJCS continued to strengthen and expand behavioral health services throughout Westchester County. All four of our **Certified Community Behavioral Health Clinics** successfully achieved recertification from the New York State Office of Mental Health and the New York State Office of Addiction Services and Supports, affirming the high quality, accountability, and effectiveness of our services.

Our Care Coordination Team—including care managers, employment specialists, and peer support professionals—provided more than 4,500 services to behavioral health clients, helping individuals secure housing, transportation, employment opportunities, and critical community resources that support long-term stability and wellness.

Clinics in Mt. Vernon, Hartsdale, and Peekskill **expanded services focused on early childhood mental health, trauma treatment, and senior care**, while staff across all WJCS clinics advanced implementation of treatment for



“I was in a dark cloud, just wanted to pull a blanket over my head, not face the reality of day-to-day life because I didn't care. Through therapy at WJCS, I was able to tap into the best version of myself. I have wings now and I can fly anywhere I want to go.”

co-occurring mental health and substance use disorders.

Integrated care remained a priority, with psychiatric assessments, medication management, and collaboration with primary care providers helping clients receive more comprehensive and coordinated support.

Recognizing the important connection between physical and emotional well-being, WJCS launched a **wellness and fitness initiative** for behavioral health clients, serving both neurodivergent and neurotypical participants. The program reflects growing research demonstrating that physical activity can significantly improve mental health outcomes and overall quality of life.

Our **Mobile Crisis Response Teams** in Central and Northern Westchester continued to work alongside local police departments to respond to behavioral health emergencies in the community, helping individuals in crisis receive compassionate intervention and support.

Programs, including Compeer, the Volunteer Internship Program (VIP), and Social Clubs, provided vital psychosocial rehabilitation services that reduced isolation, strengthened social connection, and promoted long-term wellness and recovery.

Increasing the Impact of WJCS Trauma Expertise

In 2025, WJCS formally established its Trauma Division as a separate entity, creating three distinct areas of focus: Clinical Services through the **Trager Lemp Center for Trauma & Resilience (TLC)**, **Community Trauma Services**, and the **Trauma Institute**. This important development reflects the growing demand for specialized trauma expertise across Westchester County and beyond.

Through continued support from the National Child Traumatic Stress Network SAMHSA grant, the TLC program continued its development as a **Level III Trauma Center**. WJCS clinicians and trauma specialists provided outreach, consultations, and trainings throughout the community focused on supporting traumatized children and families.

The TLC **Grief Program** expanded services for individuals, families, and groups experiencing loss and bereavement. Grief support was offered both within WJCS clinics and through partnerships in the community, including programs with Jewish Programs at Congregation Kol Ami. The program also provided support for WJCS clinicians grieving the loss of clients.

Behavioral Medicine services were introduced in multiple WJCS clinics to address chronic pain and insomnia—conditions frequently experienced by trauma survivors. Meanwhile, the WJCS Trauma-Informed Care Organization Team met monthly to strengthen agencywide standards and training, ensuring trauma-informed principles remain embedded throughout our work.

Encouraging Healthy Child, Youth, and Family Development

WJCS remained deeply committed to supporting children, youth, and families during every stage of development.

The **WJCS Parent Child Center in New Rochelle** celebrated its 25th anniversary with a joyful community gathering featuring music, games, and pizza. For 25 years, this free early childhood learning program has supported children from birth through age four alongside their parents and caregivers, helping build language, emotional, and social development skills that form the foundation for lifelong success. Families participating in **ParentChild+** enjoyed community-centered events throughout Westchester during the Week of the Young Child/El Día de los Niños, as well as year-end celebrations that included music, dancing, and

outdoor activities.

The **Envision** program continued to provide mentorship and enrichment opportunities for young women through weekly sessions focused on academic support, leadership development, life skills, and college readiness. More than an after-school program, Envision has become a trusted and empowering environment where participants gain confidence, guidance, and exposure to future opportunities.



“When I went to Margaret’s Place, I was in 10th grade and felt a lot of shame. I didn’t want anyone to know I was in a domestic violence relationship. The program changed my life. I shed a lot of the shame and realize I’m stronger because of it. It taught me that everyone deserves a healthy relationship.”

Margaret’s Place, our nationally recognized school-based violence prevention and intervention program developed in partnership with Joe Torre Safe At Home, served more than 3,100 students at Cross Hill Academy in Yonkers, Peekskill High School, and White Plains High School. The program provides comprehensive education, prevention, counseling, and intervention services related to interpersonal violence and trauma. During the summer months, Margaret’s Place expanded programming into libraries, youth bureaus, the YWCA, and collaborative groups co-led with WJCS clinicians in Yonkers.

The **Digital Equity Project** continued its mission of closing the digital divide by providing Chromebooks, Wi-Fi access, and digital literacy education to under-resourced communities. Classes were offered in both English and Spanish, and participants who completed 15 hours of coursework received

a free Chromebook and one year of free internet service.

Mental Health First Aid trainings were held throughout Westchester County, equipping school personnel, WJCS staff, and community partners with the skills to recognize signs of mental health challenges and connect individuals with appropriate support. More than 375 people participated in these trainings. Teen Mental Health First Aid entered its fourth year, empowering high school students to identify issues such as depression, substance misuse, and anxiety in themselves and their peers, while encouraging help-seeking and peer support.

WJCS also provided **educational workshops** to schools, libraries, and community organizations on topics including trauma, adolescent mental health, mindfulness, self-care, parenting, stress management, anxiety, and vicarious trauma, reaching more than 130 individuals countywide.

Teen parents in the **Young People Achieve** program received emotional support, parenting education, baby supplies, and access to resources that help them navigate the challenges of raising children while pursuing their own educational and personal goals.

Inclure—a collaboration between the Harris Project and WJCS—continued creating safe, positive, and engaging experiences for local youth. Through partnerships with schools, libraries, faith communities, and youth-serving organizations, Inclure reached more than 800 young people through activities and events that encouraged connection, leadership, and healthy social engagement.

A WJCS social worker embedded at **Greyston Bakery** provided employees with counseling support, housing assistance, wellness check-ins, HR guidance, and legal referrals. Participation increased significantly in 2025, with a 61% rise in staff served compared to the previous year.

Our Crime Victim Advocacy and Support Services program assisted 1,092 victims of crime, while Futures Without Violence—a collaboration with Westchester DSS supporting families impacted by domestic violence—served 525 clients. At the Mary J. Blige Center, new initiatives included the **Social Care Network**, which provided free tax preparation services; a **Community Resource Room** offering computer and Wi-Fi access; **community workshops; support groups; and an expanded Food Pantry** that continued to meet overwhelming community demand.

Center Lane, WJCS's LGBTQ+ youth program, directly served 173 youth ages 9–21 and 37 adults through support

groups, special events, individual counseling, Pride Camps, leadership opportunities, and community-building activities. More than 300 youth and 50 adults also participated in outreach events, workshops, and presentations, including the annual PrideWorks LGBTQ+ youth conference. Center Lane partnered with schools, congregations, and community organizations throughout Westchester, while its annual Prom welcomed more than 100 attendees.

The **Y-COP After School Program** provided enrichment programming and weekend basketball opportunities to more than 70 students, supporting academic growth, mentorship, recreation, and positive youth development.

Boosting Confidence and Community for Individuals with Disabilities

WJCS continued creating opportunities for people with disabilities to build independence, confidence, meaningful relationships, and strong community connections.



“Finding a program for somebody with special needs after school age or college is quite daunting. Since joining POINT, my son has grown beyond anything I could have ever imagined. POINT has given him the ability and capacity to show his true colors.”

The POINT (Pursuing Our Independence Together) community thrived in White Plains, serving 59 active members living in 17 nearby apartment buildings within walking distance of the community center. This model promotes accessibility, independence, and social connection for adults with special needs. POINT members participated in com-

munity safety trainings and met with local law enforcement leaders, which led to fostering increased trust and comfort in seeking help during emergencies. Recreational and cultural outings remained an important part of the POINT experience, including visits to museums, Broadway shows, sporting events, and a weekend retreat at Great Wolf Lodge.

The Shelanu/Supper Club program provided social and recreational opportunities for adults on the autism spectrum, a population that commonly experiences isolation and loneliness after college graduation. Weekly gatherings, outings, holiday celebrations, bowling nights, discussion groups, and special events helped create a vibrant and welcoming community. Weekly participation averaged 16 individuals, while larger events attracted nearly 100 attendees.

In partnership with the Shames JCC on the Hudson and funded by the Butler Foundation, WJCS introduced a **wellness and fitness initiative** for the neurodivergent community that combined exercise, cooking, life-skills development, and social engagement.

Residents and families from our **12 community residences** gathered for summer barbecues and a festive holiday celebration at the Sleepy Hollow Hotel. Participants from Chai House also created centerpieces for Holocaust Survivor holiday events, bringing creativity and connection across generations.

During Autism Acceptance Month, the Westchester County Department of Community Mental Health highlighted the success of **Project Lifesaver**, a WJCS initiative providing locator devices to children and young adults with developmental disabilities whose families seek additional safety and peace of mind.

Helping Seniors Overcome Isolation and Loneliness

Addressing social isolation among older adults remained a critical priority in 2025.

UJA SocialRx, formerly known as Isolation to Connection, continued in partnership with the JCC of Mid-Westchester to connect isolated seniors with essential community resources and supportive services. Through individualized assessments, a Connection Specialist worked with older adults, caregivers, and families to coordinate access to transportation, home-delivered meals, counseling, bereavement support groups, healthcare services, technology training, social programming, and ongoing case management.



“I didn’t talk about the Holocaust, even with my children. WJCS programs for Holocaust survivors made me feel open, and realize that we are seen and cared for. WJCS helped me to form a great community. We understand each other. Together, we cherish our memories, acknowledge our losses, and savor the life we built.”

The **WJCS NNORC (Neighborhood Naturally Occurring Retirement Community)** program in northeast Yonkers continued helping seniors age safely and independently in their homes and neighborhoods. Participants enjoyed programs including meditation, Tai Chi, chair yoga, art classes, and wellness activities, while transportation assistance helped members attend medical appointments and remain connected to their community.

Providing Social and Spiritual Support to the Jewish Community

WJCS Jewish Programs strengthened collaboration across agency divisions to ensure Jewish individuals and families could access the full breadth of WJCS expertise and services. Through this integrated approach, WJCS addressed emotional, developmental, social, and spiritual needs across the lifespan.

Project SEED (Supporting Early Emotional Development) embedded licensed social workers within nine Westchester preschools, providing support for children, parents, and educators. Staff provided classroom support, parenting workshops, professional development, and individualized guidance around issues including emotional regulation, behavioral challenges, sibling dynamics, and early intervention.

WJCS expanded programming focused on digital citizenship, social media use, and youth mental health, helping families and community leaders address rising concerns around anxiety, isolation, attention challenges, and online conflict. In response to growing antisemitism, WJCS offered educational initiatives preparing high school students to navigate conversations about antisemitism and Israel on college campuses. A new program funded by a UJA-Federation of New York grant provided **mental health support for Jewish college students** across six campuses in partnership with local Hillels.

Partners in Caring continued serving as an essential resource for clergy and congregational communities in 19 synagogues, providing referrals and support related to caregiving, bereavement, divorce, domestic violence, special needs parenting, and senior isolation.

WJCS also provided services to nearly **200 Holocaust Survivors** and members of the Second Generation through Claims Conference-funded homecare, support groups, holiday celebrations, social events, Share Shabbat intergenerational programming, and a kosher home-delivered meals initiative.



“Fifteen years ago, I was looking for a volunteer opportunity to give back. When I found out about the COMPEER program, it was a perfect fit. When we first met, my match had no friends. Today, he’s got a lot of confidence and friends. Making a difference in someone’s life in a pretty profound way makes a difference in your own life at the same time.”

STRONGER THAN EVER

The strength of WJCS is reflected not only in the programs we provide, but also in the compassion and dedication of the people who support our mission every day.

More than 250 volunteers contributed their time, energy, and care to WJCS programs and clients throughout the year. Our annual **Back to School Backpack Drive** and **Have a Heart for the Holidays Drive** broke previous records, providing hundreds of children and teens in under-resourced communities with new school supplies and holiday gifts.

Volunteerism also expanded significantly in 2025 through enhanced **Family Service Days** and new hands-on opportunities that connected individuals and families more deeply with the WJCS mission.

Corporate partners demonstrated extraordinary commitment to the Westchester community. Volunteers from Deloitte dedicated their Annual Impact Day to planting flowers and painting decorative pots for WJCS community residences and creating tote bags for families participating in the Summer Fun at Hartley Park program.

WJCS proudly launched the **NextGen Council**, an exciting new initiative designed to engage emerging philanthropists and cultivate the next generation of leaders, advocates, and supporters committed to strengthening our community for years to come.

We are also honored that WJCS was recognized by **City & State as one of its 2025 Top Workplaces**—an acknowledgment of our extraordinary staff, mission-driven culture, and unwavering commitment to serving the people of Westchester.

Now more than ever, WJCS remains dedicated to helping individuals and families heal, grow, connect, and thrive. Together with our staff, volunteers, donors, partners, and community supporters, we continue building a stronger, healthier, and more compassionate Westchester for all.



LISA LOTHIAN
Registered Nurse

**Batkin Developmental Disabilities
Professional of the Year Award**



ADRIANA HAUSLER
Social Worker, Trager Lemp Center
for Trauma & Resilience

Clinical Staff of the Year Award



SHADENE PEART
Assistant Controller,

**Family Service Society of Yonkers
Family Service Society of Yonkers
(FSSY) Dedicated Service Award**



MYRIAM BARENBAUM

**Clinical Supervisor, Trager Lemp Center
for Trauma & Resilience; Coordinator,
Nurturing Parenting & FOC Programs**

**Leonard Rohmer Outstanding
Accomplishment Award**



SHEDIFA TREASURE

Coordinator, Integrative Services

Reggie Mensch Spirit Award



HEATHER MITCHELL

**Assistant Director,
Home Visiting Program**

Reggie Mensch Spirit Award



ROBIN MUSKIN

Talent Acquisition Specialist

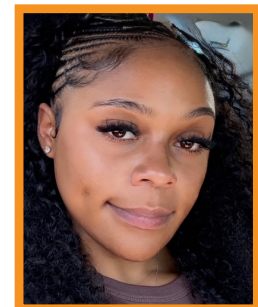
Susan Lewen Staff Excellence Award



AMANDA VASSALLO

**Clinic Director, Peekskill Certified
Community Behavioral Health Clinic**

Susan Lewen Staff Excellence Award



TIYAN CARRINGTON

Office Manager

**Bernie Kimberg
Employee of the Year Award**

Financial Statement

WESTCHESTER JEWISH COMMUNITY SERVICES AND AFFILIATES COMBINED STATEMENTS OF FINANCIAL POSITION AS OF JUNE 30, 2025 AND 2024.

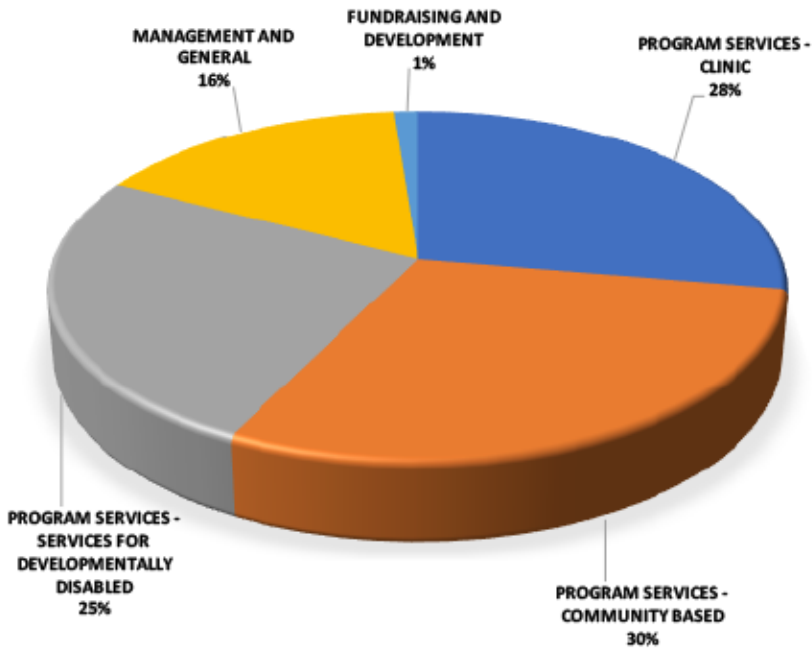
	2025	2024
ASSETS		
CASH AND CASH EQUIVALENTS	3,890,053	1,984,519
RECEIVABLE	13,343,140	9,288,769
INVESTMENTS	39,301,926	27,595,152
LEASE RIGHT-OF-USE ASSETS	2,098,798	2,183,162
PROPERTY AND EQUIPMENT, NET	6,836,667	6,934,300
OTHER ASSETS	857,490	573,454
TOTAL ASSETS	66,328,074	48,559,356
LIABILITIES		
ACCRUED EXPENSES AND OTHER PAYABLES	7,269,614	7,186,940
LEASE LIABILITIES	2,135,737	2,196,786
LOANS PAYABLE	1,738,890	4,030,847
TOTAL LIABILITIES	11,144,241	13,414,573
NET ASSETS		
WITHOUT DONOR RESTRICTIONS	34,980,610	15,632,736
WITH DONOR RESTRICTIONS PURPOSE	14,704,502	14,466,150
WITH DONOR RESTRICTIONS ENDOWMENTS	5,498,721	5,045,897
TOTAL NET ASSETS	55,183,833	35,144,783
TOTAL LIABILITIES AND NET ASSETS	66,328,074	48,559,356

WESTCHESTER JEWISH COMMUNITY SERVICES AND AFFILIATES COMBINED STATEMENTS OF ACTIVITIES FOR THE YEAR ENDED JUNE 30, 2025 AND 2024.

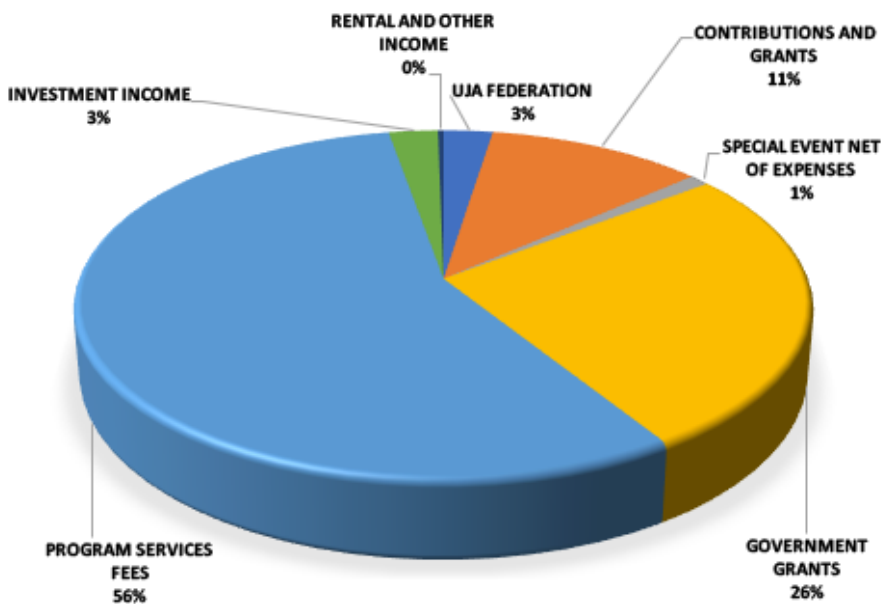
	2025	2024
SUPPORT AND REVENUE—OPERATING PUBLIC SUPPORT		
UJA/FEDERATION	1,698,250	1,894,119
CONTRIBUTIONS AND GRANTS	7,535,387	6,106,417
SPECIAL EVENT NET OF EXPENSES	706,373	411,477
TOTAL PUBLIC SUPPORT	9,940,010	8,412,013
REVENUE		
GOVERNMENT GRANTS	18,024,625	12,103,417
PROGRAM SERVICES FEES	38,343,680	26,593,537
INVESTMENT INCOME	1,703,570	1,828,882
RENTAL AND OTHER INCOME	191,021	183,851
TOTAL REVENUE	58,262,896	40,709,687
TOTAL SUPPORT AND REVENUE	68,202,906	49,121,700
EXPENSES - OPERATING:		
PROGRAM SERVICES – CLINIC	16,888,890	15,088,967
PROGRAM SERVICES – COMMUNITY BASED	18,026,122	13,678,622
PROGRAM SERVICES – SERVICES FOR DEVELOPMENTALLY DISABLED	15,510,945	16,465,045
MANAGEMENT AND GENERAL	9,763,671	9,200,370
FUNDRAISING AND DEVELOPMENT	744,613	470,921
TOTAL EXPENSES – OPERATING	60,934,241	54,903,925
CHANGE IN NET ASSETS - OPERATING	7,268,665	(5,782,225)
NON-OPERATING REVENUE		
UNREALIZED GAIN (LOSS) ON INVESTMENTS	1,539,505	1,431,662
FEMA COVID-19 GRANT	1,145,610	—
CONTRIBUTION FROM ACQUISITION OF AFFILIATE	10,085,270	—
CHANGE IN NET ASSETS	20,039,050	(4,350,563)

The complete audited financial statements including related notes and the Galleros Robinson, LLP opinion as independent auditors, may be obtained by writing to Westchester Jewish Community Services 845 North Broadway, White Plains, NY 10603 or to the New York State Department of Law, Charities Bureau, 120 Broadway, New York, NY 10271. WJCS has met all standards of the Better Business Bureau Philanthropic Advisory Service and is listed in the New York Giving Guide. Our IRS Form 990 can be accessed by going to: www.wjcs.com/financial990

OPERATING EXPENSES



OPERATING SUPPORT AND REVENUE



WJCS IS:

- A founding member of Coordinated Behavioral Health Services
- Licensed to operate mental health clinics by New York State Office of Mental Health (OMH) and substance use clinics by New York State Office of Addiction Services and Supports (OASAS)
- Accredited by Substance Abuse and Mental Health Administration for Hartsdale, Mt. Vernon, Peekskill, and Yonkers to be Certified Community Behavioral Health Clinics
- An affiliate of Compeer International
- Certified to operate Intermediate Care Facilities, Individualized Residential Alternatives, and Community Residences by the NYS Office for People with Developmental Disabilities (OPWDD)
- A partner with Westchester police Mobile Crisis Response Teams
- Accredited by the American Psychological Association as a training site for doctoral psychology interns

WJCS CONTRACTS WITH OR RECEIVES PROGRAM SPECIFIC SUPPORT FROM:

- City of Yonkers Community Development Block Grant (CDBG)
- Federal Emergency Management Agency
- Joe Torre Safe at Home Foundation
- Montefiore Hospital DSRIP
- New York State Office of Addiction Services and Supports
- New York State Department of Health
- New York State Division of Homeland Security and Emergency Response
- New York State Office for People with Developmental Disabilities
- New York State Office of Children and Family Services
- New York State Office of Faith and Nonprofit Development Services
- New York State Office of Mental Health
- New York State Office of the Aging
- Center for Practice Innovation at the New York State Psychiatric Institute
- Putnam/Northern Westchester Board of Cooperative Education (BOCES)
- School Districts of Briarcliff, Chappaqua, Elmsford, Harrison, Mt. Vernon, New Rochelle, Ossining, Peekskill, Tarrytown/Sleepy Hollow, White Plains and Yonkers
- Sun River Health Care
- Town of Cortlandt
- U.S. Department of Education
- U.S. Department of Health & Human Services
- U.S. Department of Housing & Urban Development
- U.S. Department of Justice
- Westchester County Board of Legislators
- Westchester County Department of Community Mental Health
- Westchester County Department of Probation
- Westchester County Department of Senior Programs & Services
- Westchester County Department of Social Services
- Westchester County Office for Women
- Westchester County Office of the County Executive
- Westchester County Youth Bureau

wjcs Programs

BEHAVIORAL HEALTH

Care Management for Youth

Community-based services for children with chronic health or mental health conditions, 914-237-6089

Certified Community Behavioral Health Clinics (CCBHC)

Counseling, psychiatric, Intensive Outpatient, peer and educational support, resource referrals, and other services for adults and children

- **Mt. Vernon**, 914-668-8938
- **Peekskill**, 914-737-7338
- **Yonkers**, 914-423-4433
- **Hartsdale**, 914-949-6761

Child Sexual Abuse Treatment Program*

Treatment for children and adult survivors of sexual abuse, 914-949-7699 x2475

Cross Systems Unit*

A collaboration with DSS to assist families seeking Family Court help, 914-423-4433 x3222

Domestic Violence Program*

Therapy for adults and children affected by family violence, 914-949-7699 x2471

Encompass

Services for substance-involved individuals, including individual and family therapy, 914-949-6761 x2447

Family Matters

Mental health services, case management for youth with serious emotional disturbances, 914-237-6089

Invitation to Change

Support for loved ones of substance-involved individuals, 914-949-7699 x2471

Juvenile Fire-Setting Risk Assessments

Assessments of children at risk of fire-setting, education for parents and the community, 914-237-6089

Juveniles Starting Over*

Treatment and assessment of youth with problematic sexual behavior, 914-949-7699 x2470

Linkages/Youth Success*

Mental health assessment and support for youth in the probation system, 914-737-7338 x3120

Mobile Crisis Response Team

Provides mental health co-response with police in Buchanan, Cortland, Elmsford, Greenburgh, Lewisboro, Peekskill, Scarsdale, Somers, South Salem, Yorktown, and White Plains, 845-736-8004

Nurturing Parents*

A support group that provides trauma-informed, preventative, educational workshops and comprehensive support for women and their young children affected by domestic violence, 914-423-4433 x3221

ONTrackNY

Specialized program, including counseling, psychiatric, peer, and educational/employment support, for individuals age 16-30 who have experienced first episode psychosis, 914-523-0752

School-Based Satellite Clinics

School-based mental health services:

- **Eastchester** Middle and High School
- **Elmsford**—Alexander Hamilton School, Alice E. Grady School, Dixon Primary School
- **Peekskill (SCOPES)**—Woodside Elementary School, Oakside Elementary School
- **Rye School District**
- **Yonkers**—Cross Hill Academy, Ella Fitzgerald Academy, Martin Luther King Academy, Roosevelt High School, 914-237-6089

Social Clubs

Provides social and recreational activities for people recovering from mental illness, 914-528-6995

- **Favonian Club** in Shrub Oak
- **Grasslands** life skills program in Valhalla
- **Sunset Club** for residents of Mohegan Park Home
- **Sunshine Social Club** in Shrub Oak

Substance Use Disorder and Co-Occurring Disorders Treatment

Provides specialized clinical services for substance-involved individuals and their loved ones, 914-949-6761 x2447

Trager Lemp Center for Trauma & Resilience

Research-proven treatment for childhood sexual abuse and trauma, 914-949-7699 x2475

Trauma Therapist at District Attorney's Office*

914-995-5165

VIP (Volunteer Internship Program)

Adults over age 18 who are recovering from mental illness are placed in volunteer positions at WJCS and other non-profit agencies in Westchester, 914-761-0600 x2223

WJCS Satellite Clinic @ Sun River HealthCare

Mental health services for children in a pediatric practice, 914-423-4433

Yonkers Department of Social Services Satellite Clinic

Crisis intervention and counseling to families involved with DSS, 914-231-2604

Yonkers School-Based Crisis Stabilization Services

Short-term mental health, crisis management services to several Yonkers schools, 914-487-4252

Yonkers Partners in Education

92 Main Street, Yonkers NY 10701

Youth, Teen & Adult Mental Health First Aid Training

Teaches warning signs to respond to mental health challenges and crises, 914-761-0600 x2322

CHILDREN, YOUTH & FAMILIES

Adventures in Yonkers

Early childhood summer activities throughout Yonkers, 914-595-0041 x3329

Case Management Services

Partnership with Greyston Bakery in Yonkers, providing case management to their staff. Case Managers located at Mary J Blige Center for community members and Case Management through the Social Care Network for Medicaid recipients, 914-965-9140

Center Lane

Community center, resources, and support for LGBTQ+ youth, 914-423-0610

Crime Victims Advocacy Support Services Program (CVASSP)

Provides crime victims and survivors with supportive services and trauma-informed therapeutic services, 914-761-0600 x2245

Community Resource Room

Supplies connectivity and WIFI access for free to the community, 914-965-9140

Early Step Forward

Early childhood mental health services for families with children up to age 5 at schools, childcare programs, and in the community. Includes Family Child Care Provider Program, 914-949-7699 x2423

Envision

Provides mentoring, care management, and supportive services to high-school students who are WJCS clients, 914-965-9140

Futures Without Violence

Provides advocacy, youth groups, counseling, and accountability groups for families engaged with DSS, 914-907-1988

Include

Provides substance-free social and recreational activities and programs for high school age youth, that support well-being and recovery, in partner with the harris project, 914-462-0102

Infant-Toddler Learning Center

Parenting education and children's early learning, 914-595-0041 x3329

Margaret's Place

In-school violence prevention, intervention, and education in partnership with the Joe Torre Safe At Home Foundation, 914-949-7699 x2481

- **Cross Hill Academy**, Yonkers
- **Peekskill Middle School**
- **White Plains High School**

Monthly Food Pantry

Food supplies funded by contributions from synagogues and organizations, located at the Mary J. Blige Center in Yonkers, 914-965-9140

Parent-Child Center in New Rochelle

Offers a fully-equipped drop-in center with toys, music, books, and more to promote early learning, 914-761-0600 x2426

*Part of WJCS Trager Lemp Center for Trauma & Resilience

ParentChild+

Provides home visits with early learning specialists who support caregiving skills, children's social-emotional development, early literacy, 914-761-0600 x2489

Peer Impact

Peer-to-peer support and training to develop youth leadership and advocacy skills, 914-761-0600 x2322

Summer Fun in Hartley Park

Offers a fully-equipped drop-in center with toys, music, and early learning centers at a park in Mount Vernon, 914-761-0600 x279

Young People Achieve

In-school pregnancy prevention and intervention for teens

- **Ossining High School,** 914-340-4124
- **Sleepy Hollow High School,** 914-333-0063
- **White Plains High School,** 914-422-5026

DEVELOPMENTAL & INTELLECTUAL DISABILITIES/AUTISM

Community Habilitation Services

Essential life-skills training for individuals in the POINT program, 914-761-0600 x2175

CORDD

Crisis support for people with developmental disabilities or autism who are experiencing non-life threatening situations, 914-949-7699 x2477

Counseling for People with Developmental Disabilities

Mental health services for individuals and families with developmental disabilities, including autism, 914-949-7699 x2477

Parent Management Training

Support for parents in managing difficult behaviors of children with developmental disabilities or autism, 914-949-7699 x2408

POINT

Community independent living program for young adults with intellectual and developmental disabilities, 914-761-0600 x0175

Project Lifesaver

Provides locator bracelets for people with autism who may wander, 914-761-0600 x2230

Residential Housing

Supervised and supportive living opportunities certified by New York State OPWDD for individuals with Intellectual and Developmental Disabilities. 914-761-0600 x2128

- **Beach House,** Mamaroneck
- **Bon Air House,** New Rochelle
- **Bryant House,** White Plains
- **Cannon House,** Eastchester
- **Chai House,** White Plains
- **Claremont House,** Mt. Vernon
- **Claudet House,** Eastchester
- **Gramatan House,** Mt. Vernon
- **Harrison House,** Harrison
- **Hudson Terrace,** Sleepy Hollow
- **Maple House,** Harrison
- **Palmer House,** Larchmont

Social Skills Lunch Group

Weekly therapeutic get-together to problem solve and socialize, 914-761-0600 x2477

Taft Community Center

A space for social, educational, and vocational activities for young adults and adults with developmental disabilities. 914-761-0600 x2108

Therapeutic Social Groups

Evidence-based groups for children and teens with autism, 914-761-0600 x2477

JEWISH PROGRAMS

Better on Campus

Provides mental health and wellness services for college age students in collaboration with Hillels of Westchester, 914-761-0600 x2313

Center for Jewish Programs

Counseling, support, and group programming for the Jewish community, 914-761-0600 x2423

Guiding Parents through Services (GPS)

Connects Jewish families to behavioral health services for children, 914-761-0600 x2318

Holocaust Support for Holocaust Survivors

Offers eligible survivors reimbursements for homecare aides through a grant from the Claims conference 914-761-0600 x2214

Holocaust Survivors and Second/Third Generation Groups

Offers support and community for Holocaust survivors and their families, 914-761-0600 x2541

Holocaust Survivor Socialization Program

Create meaningful connections among survivors who share a unique bond, thereby strengthening support networks and fostering a sense of community, 914-761-0600 x2541

Kosher Home-Delivered Meals

Provides kosher meals to isolated seniors, 914-761-0600 x2241

Partners in Caring and Partners in Schools

On-site counseling, educational and informational programs in synagogues and Jewish day schools, and community and senior centers, 914-761-0600 x2407

Project SEED

Provides support for directors, teachers, parents, and children in Jewish Early Learning Centers, 914-761-0600 x2128

Shelanu

A membership community for young Jewish adults with autism, 914-761-0600 x3332

SocialRX

Formerly known as Isolation to Connection, a free program for isolated older adults, offered in partnership with JCC Mid-Westchester and Shames JCC on the Hudson, to assess needs and provide connection to community services, 914-768-8901

SENIORS

Addressing Alzheimer's

Support for people with Alzheimer's and other forms of dementia as well as their caregivers, 914-761-0600 x2133

Bereavement Services

Support for those coping with the loss of a loved one, 914-761-0600 x2342

Caregiver Support

Assistance for individuals caring for a loved one living in Westchester over the age of 60, 914-761-0600 x2133

Pathways to Care

Counseling for people coping with chronic or advanced illness, 914-761-0600 x2133

Project Locator

Provides location bracelets for people with Alzheimer's and other related dementias, 914-761-0600 x2230

Project Time-Out

Provides respite for caregivers, 914-761-0600 x2310

Senior Care Management

Comprehensive services for seniors, including living options, 914-761-0600 x2340

Senior Information and Referral

Provides information on programs, services, and benefits for seniors, 914-761-0600 x2340

Yonkers NNORC (Neighborhood Naturally Occurring Retirement Communities)

Assistance to help seniors in northeast Yonkers age in place, 914-761-0600 x2344

RESEARCH/TRAINING

Edythe Kurz Educational Institute

Courses, workshops, conferences, and lectures for WJCS staff and the community at large, 914-949-7699 x2474

Psychology Externship Training

Accredited training program for doctoral candidates, 914-423-4433 x3213

Research and Evaluation

Data collection, analysis, and quality control to ensure WJCS programs and services use evidence-based practices, 914-761-0600 x2234

Social Work Internship

Accredited training program for first and second-year social work graduate students, providing field work placements, 914-668-8938 x3014

VOLUNTEERING

COMPEER

Volunteers helping adults recovering from mental illness, 914-761-0600 x2208

Recruitment

A wide range of in-person and virtual opportunities for volunteers, including virtual mentoring, 914-761-0600 x2222

VIP

Volunteer/internship experience for adults recovering from mental illness, 914-761-0600 x2223

EXECUTIVE STAFF

Seth Diamond, Chief Executive Officer
 Lauren Bassin, LCSW, Assistant Executive Director of Community Programs
 Suzanne DeLasho, LCSW-R, Chief Clinical Officer; Project Director of Certified Community Behavioral Health Clinics
 Amanda Garfinkle, B.A., Chief Advancement Officer
 Sandra Gomez-Luna, MD, FAPA, DFASAM, Chief Medical Officer
 Gayley Henry, M.A., Director of Residential Services, Community Programs
 Clive Mascarenhas, B.S., Chief Technology Officer
 Irene Math, B.S., Chief Financial Officer
 William Mullane, Ph.D., Assistant Executive Director for Behavioral Health Services
 Liane Nelson, Ph.D., Chief Psychologist; Director of Trager Lemp Center for Trauma & Resilience
 Jessica Peczyk, MPA, LCSW, Assistant Executive Director of Jewish Programs; Managing Director of Early Childhood Programs
 Milagros Rivera, MBA, Director of Human Resources
 Katrina Schermerhorn, MPA, Assistant Executive Director of Children, Youth, and Family Services
 Stephan Spilkowitz, M.A., Director of Engagement and Culture
 Shannon Van Loon, M.Ed., Chief Operating Officer

LEADERSHIP/ADMINISTRATIVE STAFF

John Alterman, LCSW, Director of Hartsdale Family Mental Health Center; Director of Edythe Kurz Educational Institute
 Patricia Alvarez, LCSW, Supervisor of Trager Lemp Center for Trauma & Resilience; Project Director of National Child Traumatic Stress Initiative (NCTSI)
 Miriam Arond, M.A., Director of Marketing and Communications
 Jack Babwah, MBA, Director of Revenue and Reimbursement
 Maria Bergamin, LCSW, Coordinator of SCOPES
 Shari Birnbaum Baum, LMSW, Coordinator of Partners in Caring
 Hilary Blackman, Director of Employee Resources & Community Partnerships
 Ann Brammer, LCSW, Director of Mt. Vernon Family Mental Health Clinic; Director of Clinic Operations, Coordinator of Social Work Internships
 Monica Brennan, LMSW, Supervisor of Yonkers DDO
 Ashley Cabrera, LCSW, Director of Department of Social Services
 Samantha Caldon, LBA, Coordinator of Community Programs Behavioral Services
 Doris Camilo, Executive Assistant/Finance Coordinator
 Rodney Campbell, B.S., Residence Manager of Maple House
 Anthony Canonico, LMSW, Director of OnTrackNY
 Ralph Capozzi, Senior Facilities Director
 Tiyan Carrington, Office Manager, Hartsdale Family Mental Health Clinic
 Danielle Cartwright, LMSW, Coordinator of POINT
 Serena Chan, PMHNP-BC, Assistant Director of Administrative Psychiatric Services
 Hanna Cohen, PsyD, Assistant Chief Psychologist at Trager Lemp Center for Trauma & Resilience, Director of Psychology Externship Training
 Cheoka Coleman, LMSW, Assistant Program Director of Family Matters
 Krystle Colon, RN, Clinic Nursing Supervisor, Yonkers Family Mental Health Clinic
 Kevin Costello, Social Club Program Coordinator
 Hope Cunningham, MPA, Coordinator, Community Programs
 Sheri Curro, Senior Clinical Coordinator
 Allison Danzig, Coordinator of Holocaust Survivors Program
 Carole Delgado, Office Manager, Yonkers Family Mental Health Clinic
 Amira De Moya, Crime Victim Service Coordinator
 Ashley DeNicolais, Human Resources Generalist
 Marjorie Dingee, LCSW, Clinical Supervisor, Mt. Vernon Mental Health Clinic
 Diana Dlugash, M.S., Director of Client Information Systems & Strategic Initiatives; Compliance Liaison
 Suzanne Doll, LMSW, Director of Linkages and Youth Success
 Timothy Dudic, B.A., Director of Grants
 Brandon Dunn, B.A., Director of Strategic Initiatives
 LeRoy Ennis, LCSW, Director of Yonkers School-Based Services
 Mary Esposito, Senior Office Manager
 Massiel Farrell, LMHC, Coordinator, Substance Use Disorder Intensive Outpatient Program (SUD IOP)
 Christina Favale, LCSW, Clinical Supervisor, Yonkers Family Mental Health Clinic
 Laura Ferrelli, LMHC, Clinical Coordinator of Mobile Response Team
 Judy Fink, LCSW, Director of Senior Care
 Sarah Fisher, LCSW, Clinical Coordinator & Director of Mobile Crisis Response Team
 Kendra Fray, B.A., Residence Manager of Claremont House
 Jennifer Funes-Martinez, LCSW, Assistant Clinic Director of Yonkers Family Mental Health Clinic
 Rivka Gorin, B.S., Assistant Director of Early Childhood Programs
 Nicole Goudreau-Green, LCSW-R, Director of Substance Use and Co-Occurring Disorders Treatment Program
 Consuelo Guerrero, LCSW, Trager Lemp Center's Senior Manager of Specialized Clinical Services
 Brenda Haas, LMSW, M. Ed, Coordinator of Guiding Parents Through Services (GPS)
 Sasha Hanchard, Residence Manager of Beach House

Wilhelminia Harris, B.S., Coordinator of WRAP Services and Peer Training
 JoAnne Helffrich, LCSW, Assistant Director of Peekskill Family Mental Health Clinic
 Leslie Hernandez, Director of Admitting and Managed Care
 Kenneth Hilton, Office Manager, Family Matters
 Dawn Jardim, Residence Manager of Harrison House
 Jade John, Psychiatric Medical Administrative Coordinator
 Jennifer Kaplan, Director of Development
 Suzanne Katz, LCSW, Assistant Director of Trager Lemp Center for Trauma & Resilience
 Jonathan Kenney, Employment Specialist Supervisor, CCBHC
 Carol Kobroff, MSW, Coordinator of Project Time-Out
 Caitlin Leon, LMSW, Director of Youth Initiatives and Community Wellness
 Norma Leon, B.A., Human Resources Manager
 Christopher Libby, Ph.D., Assistant Director, Hartsdale Family Mental Health Center; Coordinator, Dialectical Behavioral Therapy
 Valerie Litt, LCSW, Director of Yonkers NNORC
 Sierra Lockhart, LMSW, Coordinator of Margaret's Place Program
 Kenneth Mann, Psy.D, Program Director, Outpatient Services for People with Developmental Disabilities
 Dionne Marks, M.S., Accounting and Reporting Supervisor
 Zoila Marotta, Residence Manager of Gramatan House
 Geovany Martinez, LMSW, Clinic Director, Yonkers Family Mental Health Clinic
 Jodi Maxner, VIP Program Coordinator
 Ericka McCabe, A.S., Residence Manager of Hudson Terrace House
 Mike McCabe, Supervisor of Information Services
 Kathleen E. McKay, Ph.D., Coordinator of Court Assessment Program
 June McKenley, Senior Office Manager
 Phillip Menzies, M.S., Director of Youth Services
 Heather Mitchell, LMSW, MSED, Assistant Director of Home Visiting
 Catherine Mitchiner, Residence Manager of Bon Air House
 Carolyn Murphy, LCSW, Director of Children's Community-Based Mental Health Services
 Robin Muskin, MSW, Talent Acquisition Specialist
 Alyssa Neary, Psy.D., Director, Developmental Disabilities Evaluation Center
 Tally Aliphas Palefski, LMSW, Director of Early Childhood Programs
 Janet Pasetliner, Coordinator of PCHP
 Sandra Perry, B.A., Senior Residence Manager of Cannon House and Claudet House
 Isabel Pettersen, M.S., Program Manager, Youth and Senior Project Lifesaver
 Jill Phillips, BSN, RN, Director of Nursing Services
 Betty Pierre-Louis, Senior Office Manager, Mt. Vernon Family Mental Health Clinic
 Fabrice Polche, MSW, Assistant Director of Futures Without Violence
 Colleen Porrazzo, Executive Assistant and Psychology Internship Coordinator
 Nicholas Primavera, Coordinator of Shelanu
 Beth Propper, Grants Manager
 Maura Rawlins, LCSW, Program Coordinator of Margaret's Place
 Areta Reid, B.A., Coordinator of Community Programs
 Erica Rice, B.A., Revenue Accounting Manager
 Tamara Robinson, BA, Coordinator of Early Childhood Division, Yonkers
 Josefa Romero, MSW, Director of Mary J. Blige Women's Center and Advocacy
 Valerie Rosen, LCSW, Director of Integrative Services, Certified Community Behavioral Health Clinics
 Sarah Rosenwasser, LMSW, Coordinator of Early Childhood Programs
 Lorena Rucaj, LMHC, Coordinator of DCMH
 Ruth Sacks, LCSW, Clinical Supervisor, Peekskill Family Mental Health Clinic
 Jessica Sansone, B.A., Project Coordinator of Mental Health First Aid
 Alison Savitch, LCSW, Director of Community Support Services, Community Programs
 Rachel Scherer, M.S., Privacy Officer
 Weston Siano, Coordinator of Center Lane Program
 Nayftd Simons, LCSW, TLC Clinical Supervisor
 Jane Slevin, M.S., LMFT, Director of Pathways to Care
 Jahneasha Spady, Residence Manager of Palmer House
 Elana Spira, Ph.D., Director of Research
 Laura Stein, LMSW, Coordinator of COMPEER
 Rosemarie Stewart, B.S., Coordinator of Community Programs
 Jeffrey Suazo, Coordinator of Include
 Yacine Sylla, LMHC, Assistant Clinic Director, Mt. Vernon Family Mental Health Clinic
 Elizabeth Thompson, LCSW, Director of Margaret's Place
 Leisa Thompson, Residence Manager, Chai House
 Shedifa Treasure, BSW, Coordinator of Integrative Services, Certified Community Behavioral Health Clinics
 Amanda Vassallo, LCSW, Clinic Director of Peekskill Family Mental Health Clinic
 Elizabeth Verrastro, LCSW, Director of Center Lane Program
 Troy Walker, Residence Manager of Bryant House
 Suzanne Wallach, MSED, Director of POINT Program
 Donna Whyte, Quality Assurance and Training Coordinator
 Jonathan Wilson, Maintenance Supervisor
 Caitlin Wong, Marketing and Communications Manager

Thank You

Our work is made possible by the resolute commitment of individuals, foundations, and corporations who recognize the need to provide critical services to those who are struggling in Westchester. WJCS gratefully acknowledges our many donors whose contributions make our work at WJCS possible.

INDIVIDUALS

Karen and Cliff Aaron

Sydell Aaron

Judy Shandling and Elie Abemayor

Tzivya Abikzer

Linda Aboody

Anita Abraham-Inz and Richard Inz

Barry Abramson

Kimberly and Kenneth Ackerman

Peter Ackerman

Bryon Adams

Corey and John Ader

Sheila Aisenman-Katz and
Richard Katz

Kristara Alameda

Casey Albert

Chris Albrecht

Eric Alderman

Nancy and John Alderman

Michelle Allan

Jane and Norman Alpert

Leslie and David Alpert

Joyce Altman

Beth Altschuler

Loryn Altsher

Lia Amakawa

Rebecca Amaru and

Jonathan Waitman

Susan Amkraut

Atara and Michael Aq

Abby and Michel Araten

Rosemary Rogers and

Robert Arbucci

Monica Arias

Michael Armellino

Leanne and Joel Arnow

Madeleine and David Arnow

Miriam Arond and Samuel Pauker

Katrina Aronoff

Rebecca Ascher

Skylar Astaroth

Keith Auerbach

Judith Back

Melissa and Herbert Baer

Lynn and William Bagliebter

Whitney and Michael Bagliebter

Christine Balascio

Sharon and Howard Ball

Judith and Jason Balsan

Carrie and Andrew Bank

Amber Banks

Roberta Miller Bar-Levav

Nancy E. Barr

Babette and Michael Basista

Mindy and Dan Bass

Elisabeth Bassin and

Douglas Ulene

Shari and Arnie Baum

Paige Bayliss

Vivian Becker

Elana and Evan Beckman

Alisa and Jacob Beckman

Jayne and Eric Beckman

Shari and Joel Beckman

Amanda and Steven Beckman

Patty and Glenn Belkin

Maxine Bellus

Danit Ben-Ari and Tom Marton

Tomm Ben-David

Froma and Andrew Benerofe

Helena and Mark Benerofe

Idie Benjamin

Brenda and Michael Benn

Susan R. Berent

Trisanne and Samuel Berger

Amy Nadel and Peter Berke

Marilyn and Morton Berman

Jane and Rick Bernstein

Nancy and Steve Bernstein

Naomi Bernstein

Fran Berrick

Joan and Daniel Berson

Sherry Birnbaum and

Lyle Liberman

Ellen Bitkower

Bobbi Bittker

Jordan Black

Pamela Blank

Randy and Gerald Blitstein

Brenda and Charles Block

Anita Bloom

Roberta Bloom

Jennifer Bloomgarden

Joyce and Robert Blumberg

Mariquita and Matthew Blumberg

Nina and Philip Blumenfeld

Karen and David Blumenthal

Leslie Bogen

Betsy and Nathaniel Bohrer

Anna Bomwell

Anita and Randall Borkenstein

Mary and Steven Borowka

Benjamin Boykin

Donna Kaye Braham

Ayla Brakman

Ann Brammer

Cheryl Brandes Pine and
Lloyd Pine

Andrea and John Brandt

Jen Brauntuch

Barbara Bravman

Jodi and Gary Breitbart

Marsha and Gilbert Breitberg

Michele and Fred Brettschneider

Jean and Peter Brickman

Beth Brivic

Blakely and Marty Brodbeck

Alice Brodsky

Lori and Jeffrey Brodsky

Allyson Bronner

Ellen Brooks and Marshall Cohen

Howard Brown

Estate of Dorthea Brust

Marc Lust and Lois Brustman

Joy and Steve Bunson

Allie Burrows

Rebecca Burrows

Whitney and Nancy Burrows

Robert and Joanne Byrne

Edward Caffrey

Beverly Cannold

Hedy Cardozo and

Michael Rosenblut

Nancy and Michael Cardozo

Thomas Carlin

Karen Carpenter and

Paul Kayanian

Lissy Carr

Jeri and Andy Casden

Raquel Cavalcanti

Josefine Teneback Cays

Carole and Ronald Chaimowitz

Louise Challop

Judith Chananie

Deborah Chapin

Matt Chesler

Laura and Alexander Chilton

Ella Chinitz

Grace Churchill

Maryann Ciccarelli

Meagan Ciccarelli

Alison Cimmet

Olive Clampitt

Debbie Coffina

Nancy and Daniel Cohen

Janine Marlowe and David Cohen

Jenny Cohen

Louise and Robert Cohen

Susan Cohen

Lawrence and Dianne Cohler-Esses

Melissa Colavito and Keith Balter

Anne Coleman

David Collins

Krystle and Marcus Colon

Nora Contract

Hilary and William Cooper

David Cooperberg

Leslie Coplin

Rachel Coppel

Carol and Herbert Corbin

Sheila Crespi

Sindy and Kenneth Croen

John Cromwell

Brian Crowley

Toby Crystal

Nora Cullen

Randi and Roger Cunningham

James Cusick

Ellen Cutler and David Levy

Kurt Dalton

Peggy and Russell DaSilva

Alan Daskin

Christine Davey

Laurie and Jim Davidowitz

Georgia Davis

Ilene and Irwin Davison

Shayna De Lowe

Andrew DeBiccari

Lisbeth and Eugene Devlin

Marsha Diamond

Helene and Seth Diamond

Michelle Dinenberg

Adrienne Djilani

Alan Dlugash

Brian Dlugash

Gail and Laurence Dobosh

Amy Donenfeld

Wendy and Robert Dorf

Connie Douglas and

Christopher Arnold

Tim Dudic

Jason Duffy

John Dumphy

Gina and Michael Duncanson

Patti Dweck

Tami and Eitan Earnest

Barbara Ebenstein

Poornima and Karl Eber

Riva Edelman

Tova and Barry Effron

Elisabeth Ehrich and Alan Berkeley

Kate Eichel

Nicole and Scott Eisman

Audrey and Jeffrey Elliott

Donna Ellis

Anne and Marc Ellman

Erica and Lawrence Epstein

Vicki Ettenger

Hilary and William Evans and

Daniel Moretti

Cindy and Bruce Fabrikant

Ruth and Fred Fahrbach

Debbie and Paul Farfel

Shanelle Farquharson

Allison and Larry Fehrenbaker

Annette and Michael Feerman

Eloise Feinstein

Samantha Felder

Amy Feldman

Beth Feldman

Cassi Feldman

Corey Feldman

Jackie Feldman

Jenna and Russell Feldman

Mindy and Andrew Feldman

Naomi and Frederick Feldman

Tara Feldman

Rosemarie Ferrante

Allison and Matthew Fields

Gloria Fields and Andrew Seligson

Robyn and Rob Fields

Beth-Ann and Adam Finerman

Jessie and Andrew Fink

Jennifer Fink

Judy and Steven Fink

Phyllis and Frank Finkelstein

Lindsay Finkler

Geoffrey and Carol Fitzgerald

Derek Flanagan

Meira and Thomas Fleisch

Martine and Stanley Fleishman

Deborah Flood

Emily and Paul Fontana

Gabriela Letichevsky Fontes

Elliot Forchheimer

Helen Frankel

Pamela Frankel-Stein and Jon Stein

Joan Taback Frankle and

Andrew Frankle

Dana and Bruce Freyer

Allison and Ben Friedland

Jackie and Jason Friedland

Jane and Kenneth Friedland

Sheila and Robert Friedland

Yael and Adam Friedland

Fara and Jason Friedman	Lily Gordon	Ferman Hill	Juli and Daniel Karson	Laura G. Laibowitz
Karen and Edward Friedman	Mindy Gordon	Catherine Hiller	Leslye and Andrew Kaskel	Elizabeth and David Lampert
Janie and Adam Frieman	Deborah Gottheim	Alan Himmelstein	Leslie and Richard Kaskel	Elizabeth and David Landau
Judith and Richard Frimer	Debbie and Robert Gottlieb	Alan Hirschfeld and Emily Roberts	Ronald Joseph Katter	Naomi Landesberg
Deborah Frishman	Michael Graif	Amy and Doug Hirschhorn	Helene and Howard Katz	Erika and Justin Lane
Rosele and Daniel Frishwasser	Yvette Gralla	Debbie and Andy Hirschl	Leslye and Gary Katz	Ina Lane
Peter Fritz	Emily and Terry Grant	Anita Hock	Mitchell and Stephanie Katz	Beryl Langer
Donna and Robert Fryd	Dominic Gray	Lynn and Jon Hock	Paula and Eric Katz	Carol and Richard Laufer
Sue and Kenneth Fuirst	Barbara and Richard Green	Susan and Alan Hock	Courtney and Josh Katze	Miriam Laugesen
Stephanie Furtsch	Debra and Stuart Green	Casey Hogan	Beth and Gene Kava	Rachel and Richard Laxer
Debra and Jeffrey Gabel	Peter Green	Dana and Michael Hokin	Ellen Kaye	Ellen and Howard Lazarus
Monica and Andrew Gaines	Dara Greenberg	Phyllis Honig	Avery Kayle	Gina Le Done
Jennifer and Adam Galeon	Abe Greene	Debbie and Andrew Horn	Sarah and Bruce Kayle	Laura Leach
Christine Gallagher	Emiko Greene	Mary Horoszowski	Noah Kazam	Marilyn and Philip Lebovitz
Leonora Galleros	Laura and Scott Greenfield	Ann and Michael Horowitz	Joe Kelly	Alex Lechtman
Doreen and Donald Gallotti	Gerald Greenwald	Barbara and David Horowitz	Atara Kelman and Daniel Weisfeld	Leo Leder
JoAnne and Alan Ganek	Jill Greenwald and Gregory Adams	Eva and Jonathan Horowitz	Debbie Kenyon and Peter Hess	Silvia and Mark Lederman
Karen Ganz and Joe Morein	Sheila and Hal Greenwald	Paul and Roni Horowitz	Ivy and Seth Keslow	Tegan Lee
Amanda and Marc Garfinkle	Maksim Grinman	Jennifer and Dean Howell	Rochelle Kessler	Daniel Leeds
Melanie and Michael Garfinkle	Mark Grisanti	Janet Huang and John He	Geraldine Keyes and Michael Safran	Jodie Leff
Lauren and Michael Gavisser	Nora and Robert Groban	Benjamin Hughes	Valerie Kibrick-Ryan	Jackie and Ken Lefkowitz
Charlotte Geary	Seth Grossman and Liz Matejka Grossman	Patricia and William Hyman	Kevin King	Ilse Lehmeier
Terry Gedan	Helen Grubel	Rachel Hyman	Christopher Kinnon	Eileen and Peter Lehrer
Estate of Ellen Gelboim	Elizabeth and Steven Gruber	Carla and Philippe Ifrah	Monica and Kelly Kinnon	Alison Leighton
Moshe Gelboim	Jennifer and Leonard Gruenberg	Nili and Nathan Ionascu	Raya Kirik	Pat and Peter Lemp
Marnie and Peter Gelfman	Lenore Guinsburg	Karen and Paul Isaac	Roberta and Kenneth Kirshbaum	Miriam and Michael Leo
Beth Gelles	John F. Gunn	Barbara Israel	Gail Kittenplan	Olivia Leon
Susan Gerbino	Molly Gurny	Jackie and Sol Israel	Susan Kittenplan and Scott Fulmer	Brooke Lerner
Susan Lerich Gersten	Brenda Haas and Richard Albert	Julia Issembert	Rochelle Kivell	Donna and Richard Leroy
Haley Gewehr	Zoe Haklili	Lisa Izes and Jason Laks	Shelly and Howard Kivell	Ronnie Frances Lesh
Judy and David Gilberg	Stuart Hamilton	Rachel Izes	Karen and Jay Klein	Dana Levenberg
Hank Gilman	Karen Hamlin	Elizabeth and Charles Jacobs	Marcy and Henry Klein	Ira Leventhal
Carol and Allan Gingold	Courtney Hammond	Deborah and Mark Jacoby	Marlo and Eric Klein	Amy and David Levere
Joan and Samuel Ginsburg	Sang and Lisa Han	Eros Jaffee	Bettina and Michael Klein	Jordana and Stuart Levi
Laurie and Stephen Girsky	Alice Hand	Pam Jahrmarkt	Nancy Klein	Andrew Levin
Robert Glaz	Brian Hand	Elene Jalagania	Rae Klein	Leslie and Jason Levin
Andrea Glenn	Phyllis and Stanley Handler	Amy James	Roseanne M. Klein	Susanna Levin
Marina and Paul Glezer	Katherine Hannon	Michael Jankie	Arlene and Michael Kleinberg	Michelle and David Levine
Nada Beth Glick	Monique Harding	Eve and Peter Jaskow	Laura and David Kleinhandler	Glenn Levine
Elaine and James Glover	Donna and Edward Harley	Phyllis and Henry Jedda	Wendy and Scott Kleinman	Iris Levine
Linda and James Glucksman	Sally and Michael Harper	Leslie and Paul Jeris	Eda and Bernard Klinger	Jennifer M. Levine
Lauren Gold and Corey Laing	Brian Harris	Christie Johnson	Joan Klonsky	Linda Levine
Sondra Gold	Brittany Harris and Scott Willig	Euphemia Johnson	Michael Klotz	Linda and Mark Levine
Max Goldberg	Barbara and Daniel Harrison	Brittney Jordan	Irene Kohn and Harold Silverman	Michelle and Andrew Levine
Ruth Goldberg	Mary Harrison	Denise and Michael Josephs	Martha Kohn	Sandra Levine
Theresa and Keith Goldberg	Wendy and Douglas Hart	Nancy and Marin Jukic	Lois Kohn-Claar and Gary Claar	Myra Levine-Harris
John and Debbie Goldenberg	Evelyn and James Hartman	Beth and Ed Julie	Arlene and Stuart Kolbert	Jessica and Andy Levinson
Ellen and Joel Goldin	Kathryn Haslanger and Gordon Berlin	Donna and Carl Kaffeman	Shana Koransky	Alison and Charles Levy
Pat Goldman	Leya Haswell	Ellen and Joseph Kaidanow	Meredith and James Kornreich	David Levy
Sue Ellen and Peter Goldman	Alyssa Haverson	Hannah and Marc Kalikow	Karen and Lawrence Koved	Diane Levy
DelRene Goldsmith	Kathleen Hayes	Debbie and Bruce Kaliner	Jane Guttenberg and Max Kozower	Diane and Irwin Levy
Penny Goldsmith and Bob Meyerson	Lindsey Hechler	Rachel and Ian Kamper	Ellen G. Kreiger Rubin	Jonathan Levy
Richard Goldsmith	Ellen and Michael Hefter	Michelle and Steven Kanner	Lynn and Jules Kroll	Joshua Levy
Robert Goldsmith	Ina and David Helfand	Woolf Kanter	Anne Krupman	Martha Levy
Amanda and Mark Goldstein	Cindy and Randy Heller	Anna and Aaron Kantoff	Stacy and Tom Kuhn	Jade V. Lew
Arthur Goldstone	Ruth and Stephen Hendel	Sheila and Laurence Kantor	Lori and Barry Kuperberg	Madeline and Michael Lewen
Cynthia and Bennett Golub	Larissa Hennessy	Barbara Kaplan and Todd Strasser	Carol and Steven Kushnick	Sarah Rachael Lewen
Margarita and Julian Gomez	Yvette Hershaf	Rikki and Barry Kaplan	Thomas Lalaria	Susan and Barry Lewen
Nancy and Joel Gonchar	Jody Heyward	Jennifer Kaplan	Jerome S. Lachs	Ellen and Paul Lewis
Michaele Goodman		Sara Kaplan-Levenson	John Ladigoski	Lisa and Jeffrey Lewis
John Goodwin		Alla Karetny		Genette and Bruce Lieb
		Janet Karp		Roni and Jerome Liebowitz

Zoey Lin	Lynn and William Meyers	Shelley Paradis	Kathy Roman	Robin and Bill Schultz
Marion and Mel Lipetz	Tanya Meyers	Daryl and Dan Paris	Jacqueline Romano	Stacey Schutzer
Jayne Lipman and Robert Goodman	Elan Michaeli	Sarah Parker	Nicole Roos	Ellie Schwalb
Jill and Ira Lipson	Alison and Shane Milam	Pamela Parlakian	Abby Rose	Jenny and Adrian Schwartz
Lisa and Stuart Lipton	Shira Milgrom and David Elcotte	Margaret Major Patterson	Felicia and Barry Rosen	Erica and Eric Schwartz
Becca Litt	Beverly and Robert Milich	Susan and Michael Pearson	Beth Rosen and Lloyd Schloss	Lynne and Jeffrey Schwartz
Jamie Litt	Marjorie Miller	Beverly and Edwin Picker	Jane Rosen	Nancy and Ted Schwartz
Valerie Litt	Susan and David Miller	Rona and David Pickett	Joan and Seth Rosen	Roberta and Sid Schwartz
Susan and John Livingston	Susan and Eric Miller	Jessica and Walter Pieczyk	Jennifer and Michael Rosen	Reynie Schwend
Joy Lobo	Susan and Stephen Miller	Anthony Pilla	Phyllis Rosen	Hugh Scobie
Margaret and Thomas LoCastro	Teena and Kenneth Miller	Troy Pinkney-Ragsdale	Valerie and Robert Rosen	Joanna and Rich Segal
Jeanette Loeb	Donna Miness	Alexandra Pinz	Ed and Davey Rosenbaum	Sara Seiden
Diane and Don Lombardi	Arlene and Wilfred Minkin	Julie Platt	Sandi Rosenbaum	Suzanne Seiden and Kevin Thurm
Patricia and Larry Loomis	Alexandra Misuraca	Hilary and Jeffrey Plattus	Dena Rosenberg	Evelyn and Blair Selber
Michael Lowenstein	Renu and Neeraj Mital	Linda and Seth Plattus	Denise and Gary Rosenberg	Peter Seltzer
Eleanor and Henry Lowet	Elizabeth Mitchell	Abby Plotka	Janna Rosenberg and Michael Berger	Vicki and Bill Semel
Raymond Lozanes	Ellen Mitchell	Mia Plugh	Leora and Adam Rosenberg	Jill Raizen Serling and Robert Serling
Emma Lukeman	Geoffrey Mitelman	Jessica Polansky	Lisa Rosenberg	Danielle Sessa
Steve Lumbus	Jessica Eckhaus Modell	Carol Polansky-Holt	Lillian Rosenblatt	Harriet and Vito Sessa
Cathi and David Luski	Ted Montemayor	Leslie Poliak	Emily and Alan Rosenfeld	Estate of Harold Shames
Tondra and Jeffrey Lynford	Jonathan Mordech	Betty and Aaron Polinsky	Fran and Eric Rosenfeld	Amy and Corey Shanus
William and Debra Mack	Marion Morgenthal and Lance Lynford	Jean Pollak	Halina Rosenkranz	Sarene Shanus and Harold Treiber
Grecia Mahorney	Abigail Morrison	Colleen and Kenneth Porrazzo	Harvey Rosenthal	Mitch Shapiro
Jun Makihara and Megumi Oka	Andrew Morrison	Shari Post	Susan Rosenzweig	Rhoda and Richard Shapiro
Robert Mallow	Susannah Morrow	Shari and Leonard Potter	Nina and Ivan Ross	David Shatz
Jennifer Mandelbaum	Nicole and Michael Moser	Alicia Pousada	Pnina Ross	Leonard Sherman
Joanna and Eddie Manheimer	Vincent Mulvey	Logan Powers	Edith and Rick Roth	Catharine and William Shirley
Jordana and Mike Marinelli	Una Murray	Victoria and Barry Presser	Laurie and Eric Roth	Danielle Shlos
Barbara and Martin Marks	Robin and Daniel Muskin	Alissa Kosowsky and Andy Pressner	Ronni Roth	Sarah Shonbron
Elizabeth Marrinan	Robin Nack	Beth Proper-Rubin	Amy and Robert Rothman	Mindy and Steve Shulman
Susan and Kevin Marrinan	Donna and Paul Nadel	Helaine and Michael Pruzan	Janet and David Rothstein	Margaret Shultz
Earle Frederick Marsh	Daniel Nadelman	Debra Pruzan-Clain	Seth Rowland	Shirley and Hymie Shwiel
Sharon and Bill Martin	Mark Nadler	Donna and David Rabin	Elise and Howard Rubin	Lilian Sicular
Bonita Mary	Christina Nakraseive	Ellen and Maidad Rabina	Joanne Ruckel and William Potter	Rishana Bloom and Aaron Siegel
Margery and Edgar Masinter	Bonnie Silverman and David Nanus	Harriet and Douglas Rachlin	Leslie Rusoff	Karen and Kenneth Siegel
Barbara and Bernard Masur	Amy Kreisberg and Michael Nathan	Michael Radosta	Karen Rustad	Nurit and Charles Siegel
Jodi Maxner and David Rauch	Tracy and Michael Nathanson	Jill Raker	Tiffany Sabharwal	Stacey and Jeffrey Silberzweig
Daniella Mayer and Martin LaGuerre	Liane Nelson and Todd Gagne	Naomi Ramer	Ann and Bill Sacher	Robin and Gerald Silk
Heather Mazursky-Horowitz and Benjamin Horowitz	Penny Nemzer and Daniel Taitz	Suzi Randolph	Mortimer Sackler	Fiona and Steve Silver
Karen McCabe	Daniel Newman	Joan Ratner	Susan Safir	Vicki and Kenneth Silver
Judy and Bob McCarthy	Daniel Newman	Alan Raylesberg	Judy and Kenneth Sagat	Carol Silverman
Rosemary McClare	Yan Ni and Stephen Gold	Rhonda and Ken Regan	Myrna Sameth	Caryn Silverman
Cathlin McGrath	Amy and Andrew Nichols	Bernadette Renwick	Dorianne Samuels	Melissa Gitelman and Steven Silverman
Stacey Nolan Meaney	Mary Nicolich	Seth Resnick	Wendy and Neil Sandler	Samuel Simmons
Laurie and Larry Medvinsky	Linda Nisselson	Lori Richards	Suzanne Santana-DeLasho and Patrick DeLasho	Bernice A Simon
Jonathan Mehlman	Mary F. Noble	Heidi and Richard Rieger	Ellen Sarna	Nancy and Andrew Simon
Arel Meister-Aldama	Robert Nolan	Marilyn Kneller-Rimsky and Neil Rimsky	Leslie & David Sarraf	Wendy and Gary Simon
Deborah Melincoff and Hooman Yaghoobzadeh	Ann Noone	Andrea Ritchin	Amy and David Sass	Amy and Alan Singer
Mark Melrose	Stacey and Howard Norowitz	Gillian and Peter Rittmaster	Robin Nichinsky and Seth Schaffer	Naomi Siwek
Yitzhak Mendelson	Barbara and Barry Novick	Milagros Rivera	Helene Scharf	Karen Skinner
Robert E. Mensch	Stuart Novick	Valerie Robbins	Susan Scharf	Rose Skinner
Joshua Meredith	Lauren Thaler and William Null	Jami Robertson	Beth Scharfman and Uri Shabto	Jonathan Skolnick
Gregg D. Merksamer	Marisa Office and John Gunn	Amy Harrison Robin and Frederick Robin	Joyce Schaul	Josh Skolnick
Robert Merlin	Elizabeth O'Loughlin	Leslie Robinson and Stephen Kass	Carol and Michael Scheffler	Jane and Kenneth Slevin
Carol Richards Mermey and Steven Mermey	Victoria Olsen and Joshua Seiden	Laurabeth and Rand Rodgers	Elizabeth and Scott Scheffrin	Tara Slone-Goldstein and Wayne Goldstein
Ellen Metzendorf	Samantha Pagnotta	Linda Rodman	Rochelle Scheib	Beverly Shipko Sloofman
Lisi Metzger	Yueyun Pan	Lisa and Andrew Rodman	Brenda and Jonathan Scher	Denise and Duncan Small
Joshua Meyer	Frances Pantaleo and Robert Freedman	Toby Rodman	Leah and Robert Schiffman	Cody Smith
	Jenni Pantoja Vallejo	Yolanda Rodriguez	Shari and Corey Schneider	Deborah and Scott Smith
			Miriam Scholl	

Mary Eagleson Smith
Jessica and David Smootha
Evelyn Snow
Jennifer and Bart Sokol
Walt Sokoll
Leonard Solomon
Jocelyn and Scott Sontag
Danny Soroker
John Sosbee
Deborah Spanierman
Sacha Spector
Donna and Edward Spiegel
Stephanie and Lee Spiegel
Stephan Spilkowitz
Ann and Paul Spindel
Myra Kramer and Frank Spitalny
Erin Spitzberg and Bruce Laxer
Abby and Jonathan Spivak
David Stahl
Dina and Jeffrey Stahl
Orianna Starace
Stephanie and Kent Stauffer
Amy and Rob Stavits
Samantha Bauer Stavits
and Ross Bauer
Esta Stecher
Audrey Stein
Marianne and Jeffrey Stein
Gina Stephenson
Paula Steren
Rona Sterling
Edith Stern
Lauren and Lenny Stern
Susan and Jeffrey Stern
Richard and Audrey Steuer
Stifel Charitable
Benjamin Stillman
Lila and Abbott Stillman
Angie and Roy Stillman
Jennifer Stillman Lewis
Valerie and James Stone
Jan Stone
Tamar Stone
Henry G. Stroobants
Dalia Strum
Elizabeth and Mayo Stuntz
Kevin Sullivan
Matthew Sullivan
Pearl and Thomas Sullivan
Harry Sunshine
Harriet and Marc Suvall
Leesa and Michael Suzman
Debbie and Barry Swidler
Daphne S. Swinton
Steve Symonds and Jessica Kaplan
Andrea and Ken Taber
Lisa and Josh Tane
Stuart and Dori Tapper
Jenna and Lance Taubin
Heather Taylor
Nicole Taylor
Caitlin Teitelbaum

Stephanie and Corey Tessler
Lauren Tetenbaum Dorman
Sherry and Laurence Thaler
Rebecca Thomas
Elizabeth Thompson
Susan and Lawrence Tolchin
Judy and Arthur Topilow
Nio Torosian
Gary Trachten
Lynn and Alan Trager
Ruth and Eric Treiber
Barbara Tropea
Stephen L. Tseckares
Anne E. Tucker
Karen Tumelty
Jane and Harris Turkel
Judith Uman
Georganne Walker and
Michael Usem
Jerry van Koolbergen and
Phil Johnson
Ariela Vasserman
Jocelyn Verdi
Jane Veron and Andrew Feldstein
Anne Verrastro
Elizabeth Verrastro
Sharyn and Brendan Vetter
Michelle Veyvoda
Eileen and Nick Visco
Harry Waizer
Barbra Waldfogel
Jonathan Wallen
Leana Walsh
Amy and Jeffrey Wang
Ling Wang
Harper Waskow
Marla Wasserman
Melinda Wasserman
Harriet and Nathan Wasserstrum
Jodi and Mitchell Waxman
Stephanie and Ernie Wechsler
Lesley Levine and Edwin Weinberg
Fanne and William Weinberg
Herbert Weiner
Margery and Paul Weinstein
Carol and Allen Weintraub
Carol and Jay Weissbrot
Florence Weisz
Jesse Weisz
Emily G. Werthamer
Kathleen and John Wessling
Ally Weston
Pam and Bruce Wexler
Elinor and Paul Wharton
Philippa and Philip Wharton
Lorraine Wiedorn
Robert R. Wiener
Tania E. Wilk
Robin Willey
Henry Wilson
Liberty Wilson
Sarah Wilson

Suzanne and Robert Wilson
Ari Winkleman
Sherry Winter and Tracy Smith
Sara Wolf
Evie and Joel Wolfson
Nancy and Elliot Wolk
Darren Wood
Emily Wood
Carolyn and Andrew Wright
Lauren Wyler-Smith
Beth and Nicholas Wyman
Robert Yaffa
Alisha Yallowitz
Suzanne and Andrew Yearley
Kim Yellin and Marc Stern
Jessica Yood
Gail Young and Ken Jurist
Beth Zadek and Joph Steckel
Caren and Steven Zelicof
Joy and Steven Zelin
Hilary and Matthew Ziffer
Karen Zilber
Karen Ziman
Nicky Ziman
Liz and David Zimmerman
Barry Zingman
Sharon Zoffness
Neil and Corinne Zola
Jannine Zucker
Erica and Peter Zurkow
Jessica Zweifach and
Matthew Sterman

ORGANIZATIONS & FOUNDATIONS

A More Perfect Union/
The Goodnation Foundation
Aegon Transamerica Retirement
Solutions
Aging In America, Inc
Alice and Olivia LLC
Alzheimer's Association
American Online Giving
Foundation
Ampacet
Arnold Bortman Family Foundation
Arthur Gallagher & Co.
AT&T Employee Giving Campaign
Bank of America Charitable
Gift Fund
Bet Am Shalom Synagogue
Beth El Synagogue Center
of New Rochelle
The Bezos Family Foundation
Brae Burn Country Club, Inc.
Briarcliff Congregational Church
Brooke St. Staffing, LTD
Brown and Brown
The Thomas & Agnes
Carvel Foundation
Chabad of the Rivertowns
Child Care Council of Westchester

Club Shalom Heritage Hills
of Westchester
Cogitandum Inc.
Compeer
Conference on Jewish Material
Claims Against Germany
Congregation Emanu-El of
Westchester - Rye
Courtlandt Lodge F&AM
Cuddy & Feder LLP
The Dammann Fund
Deloitte
Enterprise Fleet Management, Inc.
The Epstein Teicher Philanthropies
Family Ties of Westchester Inc.
Fidelity Charity Gift Fund
Field Hall Foundation
Galleros Robinson, CPAs LLC
Garfunkel Wild, P.C.
George, Joan & Jack Shuster
Foundation
GHP Office Realty
GLSEN, Inc. Hudson Valley
Google Matching Gifts Program
Grassy Sprain Longterm Care, Inc
Greyston
Guardian Life Insurance Company
Hackley Task Force
The Harris Project
House of Flowers
IBM Corporation
The I.W. Foundation, Inc.
Iona College
Jackson Lewis P.C.
Jaxon Maintenance Services
The J.E. & Z.B. Butler Foundation
Jewish Community Center of
Mid-Westchester
Joe Torre Safe At Home
JP Morgan Private Banking
Karelsie Foundation
Kids' Club of Tarrytown
& Sleepy Hollow
Kirkland & Ellis LLP
Lever & Ecker, PLLC
Made with Love Studio
Maxx Properties/Philanthropy
Metropolis Country Club Inc.
Foundation
Montefiore Hudson Valley
Collaborative
National Mah Jongg League
Foundation
National Philanthropic Trust
Network For Good
The New York Community Trust
New York Presbyterian Hospital
Westchester Division
New York State Parenting
Education Partnership (NYSPEP)
Nextgen Management, LLC
Norger Foundation

Norman E. Alexander Family
S Foundations
Old Oaks Foundation
Partnership to End Addiction
Patricia A DiChairo School
Paul, Weiss, Rifkind, Wharton
& Garrison
The Pelham Jewish Center
Penny Lick Ice Cream Company
PFK O'Connor Davies
Phelps Community Foundation
Plaza Jewish Community Chapel
POINT Family & Friends
Presbyterian Women of First
Presbyterian Church
Purchase College / Purchase
College Foundation
Regeneron
The Rosenfield and Glassman
Foundation
RSM US LLP
Scarsdale Synagogue Temples
Tremont and Emanu-El
SeaChange Capital Partners
Search for Change
Seed the Dream Foundation
Sentinel Solutions
The Sexauer Foundation
St. Faith's House Foundation
Stifel Charitable
Stop & Shop - Purchase
Stop & Shop - Eastchester
Stop & Shop - New Rochelle
Temple Beth El of Northern
Westchester
Temple Israel Center of
White Plains
Temple Israel of Northern
Westchester
Tenshore Realty, Ltd.
Trachtenberg and Pauker, LLP
Two Sigma Investments, LP
UJA-Federation of New York
United Way of Westchester
Putnam
Warner Bros. Discovery
Theodore and Renee Weiler
Foundation
The Harry and Jeannette
Weinberg Foundation
Westchester Community College
Westchester Jewish Center
Westchester Jewish Council
Westchester Reform Temple
Westchester Soccer Group, LLC
White Plains Hospital
The Wiener Philanthropy
The Wolfensohn Family Foundation
Yorktown Center for Specialty
Surgery - SCA Health



Members from WJCS OnTrackNY attended a Westchester Knicks basketball game with courtside seats! Pictured here: Emma Mesi, Primary Clinician (left) and Tracy Stewart, Supported Education & Employment Specialist (right).



WJCS NextGen volunteers stepped up and mobilized in a major way for the holiday season, organizing a generous food pantry initiative to support families for Thanksgiving. Thanks to their leadership and the contributions of our community, hundreds of households throughout Westchester, who are supported by the WJCS Food Pantry at the Mary J. Blige Center in Yonkers, received holiday essentials and fresh ingredients to celebrate with dignity. Pictured here: WJCS Chief Advancement Officer Amanda Garfinkle, WJCS Board Member and NextGen Chair Steve Beckman, NextGen Co-chair Amanda Beckman, and family.



More than 50 Holocaust survivors, along with their relatives and caregivers, gathered to celebrate the Jewish holiday of Sukkot at Westchester Reform Temple in Scarsdale. From left, State Senator Shelley B. Mayer, Michael Elkin, CFO of the Claims Conference, Allison Danzig, Coordinator of WJCS Holocaust Survivor Services, and William B. Shirley, WJCS Board President.



WJCS was proud to host our first Family Volunteer Day Event on Veteran's Day. About 60 children, parents, families, and local community groups, including Girl Scouts Troops #2190 and #2775, gathered at WJCS to volunteer their time.

WJCS Board member Linda Plattus hosted our 20th Annual Have a Heart for the Holidays Gift Drive Luncheon! The luncheon raised over \$10,000 and collected more than 250 toys. Gifts were distributed to WJCS clients who live in under-resourced Westchester communities. From left to right: Jessica Levinson, UJA Board Observer Jen Galeon, CAO Amanda Garfinkle, Jessica Eckhaus Modell, NextGen Council Member Fara Friedman, and WJCS Board Member Allison Friedland



wjcs is here for Westchester.

MENTAL HEALTH AND SUBSTANCE USE

- 3,500+ clients
- 4 Certified Community Behavioral Health Clinics in Hartsdale, Mount Vernon, Peekskill and Yonkers
- 14 satellite clinics

DISABILITIES AND AUTISM

- 12 community residences for adults with disabilities as well as independent living programs
- Support and advocacy
- 4 Social clubs

CHILDREN, YOUTH AND FAMILIES

- 300+ families in parenting & child development programs annually
- 3,000+ students educated about violence prevention
- 11 schools with WJCS satellite clinics

TRAUMA CENTER

- Evidence-based trauma therapy
- 1,168 crime victims provided with trauma-informed support, crisis intervention and safety planning

SENIOR CARE

- 2,250+ clients served annually
- Case management
- Social and recreational activities
- Support groups for caregivers of those with Alzheimer's and dementia

CENTER LANE

- 3,500+ clients annually
- Supportive programming for LGBTQ+ youth ages 13-21 and their families
- The only center for LGBTQ+ youth in Westchester

JEWISH PROGRAMS

- 19 partner synagogues
- Support for Holocaust Survivors and 2nd Generation
- 1,600+ counseling sessions provided for students, parents, teachers, clergy and staff post-October 7

COMMUNITY TRAININGS

- 500+ people trained in Mental Health First Aid
- Workshops including mental health, supporting students, trauma and self-care
- Professional development through the Edythe Kurz Educational Institute

HEALTH AND HEALING SUPPORT

- Bereavement support groups and referrals to community resources
- Caregiver respite
- Support for individuals and families facing chronic or life-limiting illness

WWW.WJCS.COM 845 N. Broadway White Plains, NY 10603 914-761-0600



wjcs
Westchester Jewish
Community Services

