

wjcs

2022 IMPACT REPORT

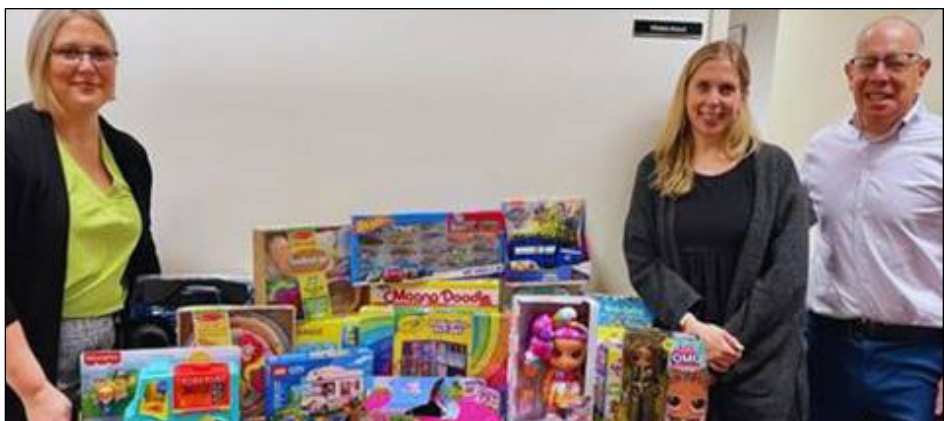


WE TRANSFORM
LIVES TOGETHER

Opening day of the Summer Fun Program in Hartley Park in Mt. Vernon was full of fun, art, and games.



Our Succot luncheon for Holocaust Survivors was a joyous celebration.



Our annual Have a Heart for the Holidays Drive provided toys to young children and gift cards to older ones to ensure that families in need enjoy the holiday season.



We were thrilled to welcome parents, caregivers, babies, and toddlers back to the Infant Toddler Learning Center after a long pause due to COVID isolation regulations.



New York State Senator Andrea Stewart-Cousins delighted the girls in our Wiener Academy for Young Women summer program.

It is our pleasure to share with you the Westchester Jewish Community Services 2022 Impact Report, Transforming Lives Together.

We have all learned many lessons over these past difficult years. We value our health more than ever. We appreciate the joy of seeing people in person more than we did. We understand better the heroic work of those who come in to work in person every day to help others and for whom remote work is not an option.

But the most important lesson we have learned over the past years is how much we need each other. None of us can do it on our own but together we can help each other through life's most difficult challenges.

We bring that lesson to our work at WJCS every day. Those we serve are never alone. Our Community Programs staff are with those who have developmental needs every day and night. Using both in-person and virtual appointments, our clinic staff connect with people in our office, in their home, or at their place of employment, wherever it is best for them. Our school-based social workers are in our schools, providing critically needed counseling to students. And our ParentChild+ program has expanded to new communities, where we are visiting more families in their homes and helping more children than ever with their social and emotional wellness.

The combination of our clients' strength and courage and the wonderful skills and dedication of our WJCS staff let us transform lives. At our Yonkers, Mount Vernon, and Peekskill clinics, we have expanded services to not only help people with their behavioral health needs but also give them a wide range of services they need to make progress in all aspects of their lives. Counselors now assist with connecting people to medicare care, employment, housing and legal issues, and to other resources. Our

Community Programs staff help our residents with the difficult process of re-engaging after two years of isolation, letting them recapture a portion of their lives that was lost. We have expanded our work with Holocaust survivors, allowing survivors to experience joy at events that celebrate their determination and resilience. LGBTQ+ young people facing great rejection in school and at home find, maybe for the first time in their lives, at Center Lane a community to support them. Our senior programs help older adults, who can often experience loneliness, enjoy life in the home and community.

WJCS does not do all this wonderful work alone. We work with volunteers and partner with a network of government agencies and other community organizations. The UJA Federation provides strong backing in all we do.

We are grateful to you for all your support. We could not help 20,000 Westchester residents each year without you. From all of us, thank you. It is only together that we can truly transform lives.



Seth Diamond
Chief Executive
Officer



Bruce M. Freyer
Board President

President

Bruce M. Freyer

Vice Presidents

Barry Kaplan
Michele Brettschneider

Treasurer

Adrian Schwartz

Secretary

William Shirley

Directors

David A. Alpert
Michel Araten
Joel Beckman
Steven Beckman

Froma B. Benerofe
Karen Blumenthal
Mariquita Blumberg
Ron Chaimowitz

Carol H. Corbin
Mindy Feldman
Meira Fleisch
Ellen Gelboim
Julian Gomez
Dean Howell
Sarah Kayle
Laura Kleinhandler
Meredith Kornreich

Bob Mensch
Carol Richards Mermey
Linda Plattus
Neil T. Rimsky
Nina Ross

Shirley Shweil
Roy Stillman
Suzanne Kogan Yearley

Honorary Members

Alan R. Batkin
Jane M. Batkin
Emily Grant
Philip Halper
Liz Jaffe
Hon Nita Lowey
Maida S. Silver
Cecile D. Singer
Frank Spitalny
Robert Stavits

Past Presidents 1943-2022

Aaron W. Davis
Samuel J. Schur
Stanley Roth
Edward N. Bratter
Erwin Schwarz
Stuart B. Glover
Jack Gross
Elizabeth Schoenberger
Peggy Moses
Frank J. Spitalny
David G. Sacks
Philip Halper
Kenneth Weiser
Herbert Fischgrund
Judy Tenney
Chester L. Thomson

Alan R. Batkin
Froma B. Benerofe
Robert L. Wolfe
Philip Halper
Harold D. Goldsmith
Maida S. Silver
Robert M. Stavits
Michel Araten
Carol Corbin
Barry Kaplan
Neil Sandler
Mariquita Blumberg

IMPACT REPORT 2022

Transforming lives is our privilege and passion at Westchester Jewish Community Services.

In 2022, as the world emerged from the worst of the COVID pandemic, WJCS grew and innovated to meet the increasing emotional, educational, spiritual, social, and practical needs of Westchester residents. Here are some of the highlights of our 80+ programs.

BEHAVIORAL HEALTH

WJCS Certified Community Behavioral Health Centers, (CCBHCs) in Yonkers, Mt. Vernon, and Peekskill offered mental health clients “wraparound” services, including connection to housing, legal, and other community resources, advocacy assistance, and hands-on help during at-home visits.

All individuals treated for mental health conditions at WJCS clinics were encouraged to meet with one of our Licensed Practical Nurses (LPNs) for a **Health Monitoring Visit**. During these visits LPNs checked vital signs, ensured medication safety and compliance, administered injectable medications, screened for medical problems, provided health education, and made the connection to primary and specialty medical services, when needed.

WJCS, partnering with the Peekskill Police Department, launched **the first Mobile Crisis and Response Team in Westchester**, incorporating mental health services into crisis response. We also trained 20 clinicians and staff in **Cognitive Behavioral Intervention for Trauma in Schools**.

Our clinical staff continued to provide therapy using a hybrid model of in-person and telehealth visits. We increased the number of employees who offer **specialized treatment for substance use and co-occurring disorders** and launched a monthly training series for all staff to learn about screening and treatment. Furthering WJCS’s position as a leader in providing a “no wrong door” experience of care in Westchester, we secured a license from the New York State Office of Addiction Services and Supports to provide expert evidence-based treatment to people irrespective of whether they have a mental health diagnosis, substance use diagnosis, or co-occurring mental health and substance use disorders.

Experts from our Trager Lemp Center for Treating Trauma and Promoting Resilience led **trainings about trauma, secondary trauma, and creating a trauma-informed work environment** throughout Westchester and New York State.

204 ParentChild+
families received
4,826 visits, a combination
of remote and in-person.

WJCS Certified Community Behavioral Health Center staff provided 5,255 wraparound services to clients in Peekskill and Mt. Vernon.



TRANSFORMING LIVES TOGETHER

CHILDREN, YOUTH, AND FAMILIES

We opened a **Parent Child Center in Tarrytown**, and launched a new **ParentChild+** program in Yonkers, with a social component. Families had one home visit a week and one weekly group visit at the WJCS Infant Toddler Learning Center. We brought our **Early Step Forward Program** to the Martin Luther King and Hostos schools in Yonkers and offered remote support groups for parents of infants and toddlers in English and Spanish. **The Family Child Care (FCC) Provider Program** returned to being in person, serving five child care programs in Mount Vernon and New Rochelle. Mental health consulting was offered for current and alumni FCCs.

The Wiener Academy for Young Women introduced a STEAM (Science, Technology, Engineering, Art and Math) component, in partnership with Cornell Cooperative Extension, to its afterschool academic support, enrichment, and social/emotional wellness program for girls at the WJCS Mary J. Blige Center in Yonkers. Also new: a Girl Scout troop, led by a Wiener Academy parent.

After a two-year break due to the COVID pandemic, **Center Lane** once again hosted in-person events, including its 25th Anniversary LGBTQ+ prom, at which 122 youth from 31 high schools in 27 communities attended. Center Lane

staff, committed to its mission of community education conducted 81 LGBTQ+ presentations and trainings for 3,209 people (1,584 youth and 1,624 adults) in school districts and community organizations, focusing on a wide range of issues, including creating inclusive environments and supporting trans and gender diverse youth. Attendees expressed appreciation, noting “I more clearly understand gender identity.” “I learned how to better meet the needs of my LGBTQ+ students.” “I learned ways to avoid gendered language.”

The Digital Equity Project continued to provide free Chromebooks, WiFi access, and tech tutoring to youth and adults in under-resourced communities in English and Spanish. Over 20 volunteers participated in our **Virtual Mentoring Program**, assisting youth in grades 1-9 with homework help, organizational skills, and emotional support on a weekly basis to students in Yonkers, Mt Vernon, Peekskill, & Ossining.

WJCS dramatically increased its number of **Youth, Teen, and Adult Mental Health First Aid** trainings to underserved communities disproportionately impacted by trauma stemming from COVID-19 and systemic racial disparities, reaching over 600 individuals throughout Westchester.

The Crime Victim Advocacy and Support Services Program (CVASSP) was launched to provide comprehensive services to all victims of crimes.

WJCS OnTrack NY provided 922 services, including therapy, peer support, and employment and educational counseling to 36 clients, age 16-30, who experienced a first episode of psychosis.

WJCS clinical staff provided 82,757 therapy services, in-person and via telehealth, to approximately 3,581 individuals.

10 Dialectical Behavioral Therapy (DBT) groups, the most widely used treatment modality for at-risk behaviors and emotional dysregulation, were offered for clients of different ages.

DISABILITIES AND AUTISM

Most individuals in our **Community Residences** returned to their day programs after a long absence due to the COVID pandemic. Group residences hosted summer barbecues, although they were kept smaller than previously to ensure greater safety.

POINT (Pursuing Our INdependence Together) participants were very busy in 2022 with a robust schedule of activities. They put on a superb Theater for Action production of Fiddler on the Roof and went on outings to The Jewish Museum, Bryant Park Holiday Village, Rockefeller Christmas Tree, a Yankee Game, and a water park. They enjoyed a Movie Under the Stars, a Halloween Party, Spring Dance, and collected enough non-perishable items to donate 18 bags to local families in need during the holiday season. Each bag included a hand-written holiday card that they created during their art group. Their monthly calendar included Mindfulness, Sports Talk, Girls Talk, Vocational Empowerment, Book Club, Virtual Voyages, and other recreational and support groups.

Project Lifesaver provided radio frequency-operated locator bracelets to 80 youth and young adults with autism or another developmental disability in Westchester, plus 60 seniors with Alzheimer's or a dementia-related disease, who are at risk of wandering. WJCS helps families with applications for this free device, maintenance/battery changes, troubleshooting, and extending their protection to other agencies in the U.S. while on vacation outside of our county.

JEWISH PROGRAMS

Project SEED (Supporting Early Emotional Development) co-sponsored a series for early childhood educators with the Jewish Education Project on Gender, Sexuality and the Family. Educators from Jewish early childhood centers nationwide attended and engaged in discussions about how to make classrooms safe spaces for the development of identity.

Our **Holocaust Survivor Program** flourished. The Claims Conference increased its grant from \$1M to \$2.5 million, with funds predominately used to pay for homecare expenses that allow Survivors to remain in their homes with the necessary care and assistance to maintain the dignity that was taken from them in their youth. In partnership with UJA-Federation of NY, we hosted Holocaust Survivor Day, Hanukkah and Sukkot Luncheons. We launched a **Share Shabbat** program where we pair a volunteer (often with young children) with a Survivor to bring them a Shabbat meal the last Shabbat of every month. The program has fostered relationships and helped new generations be memory keepers of the Holocaust when Survivors are no longer here to tell their eyewitness accounts. The WJCS **kosher home-delivered meals program** expanded to reach more homebound vulnerable and isolated aging Jewish clients, including Holocaust Survivors.

WJCS partnered with school districts to deliver training tailored to meet adult and school community needs, providing 6 workshops reaching 513 adults on topics including mental health, supporting students, trauma/vicarious trauma, and self-care.

Programs led by WJCS social workers in our **Partners in Caring** synagogues included **Let's Talk About It**, a support group for parents who have children in an interfaith relationship and the **Grandfriends** program, in which adults spend an hour working with children in the 4-year-old early childhood class on an art project. As one of the adults remarked, the children are so kind to each other, it gives her hope for the future generation.

Due to increasing demand, **Pathways to Care** added more support groups for those caring for a loved one with Alzheimer's or a dementia related-disease. Members express gratitude for having a forum in which they can speak freely, without judgement or guilt and receive support, not only from professionals, but also from their cohorts experiencing similar situations.

3,000 students were educated about domestic violence, sexual assault, and healthy relationships through school awareness campaigns organized by Margaret's Place.

SENIOR CARE

Our wide array of programs and services has been instrumental in helping seniors in Westchester remain engaged in their community and age safely in place, whenever possible.

Geriatric Care and Case Management staff assessed and assisted clients, families, and caregivers throughout the county by providing them with information and assistance via phone, emails and home visits to help seniors obtain the programs, services, benefits, and entitlements for which they are eligible as well as providing mental health counseling when needed.

Respite program consultants from **Project Time-Out** provided a much-needed break for caregivers from 24/7 care and socialization to the seniors being cared for.

The Yonkers Neighborhood Naturally Occurring Retirement Community (NNORC) assisted seniors living in Northeast Yonkers by offering a robust calendar of programming. A mix of in-person and Zoom health and wellness classes, art programs, holiday celebrations, and library events kept community residents entertained and engaged. High school students from the YPIE (Yonkers Partners in Education) Tech Squad helped seniors register for the COVID vaccine and use technology to socialize and benefit from recreational programming.

WJCS' **Livable Communities Program**, a partnership with the Westchester County Department of Senior Programs and Services continued to provide educational and cultural programming and support services to seniors.

WJCS School-Based Clinics in Yonkers, provided DBT-“lite” groups, 2x week for 12 weeks, to over 150 middle schoolers.

WJCS Center Lane, the only program dedicated exclusively to serving LGBTQ+ youth under 21 in Westchester, served 3,537 people—1,824 youth and 1,713 adults. Youth attending Center Lane programs and events came from 74 zip codes, 56 communities, and over 85 middle schools, high schools, and colleges.



CONGRATULATIONS

TO OUR 2022 STAFF AWARD WINNERS

SETH DIAMOND

CEO

Westchester Power 100

By City and State, NY

JUDITH FINK

Director, Senior Care

Outstanding Community Service

New York Office for the Aging

ROSEMARY STEWART

Rosemary Stewart, B.S., Residence Manager, Claremont House

Batkin Award

ANA RODGERS

Crisis Stabilization Social Worker, Yonkers School-Based Programs

Clinician of the Year Award

TAMARA ROBINSON

Program Coordinator, Infant-Toddler Center

Leonard Rohmer Award

AARON TEPLITSKY

Information Systems Support Technician

Bernie Kimberg Employee of the Year Award

FINANCIAL STATEMENT

WESTCHESTER JEWISH COMMUNITY SERVICES AND AFFILIATES COMBINED STATEMENTS OF FINANCIAL POSITION AS OF JUNE 30, 2022 AND 2021.

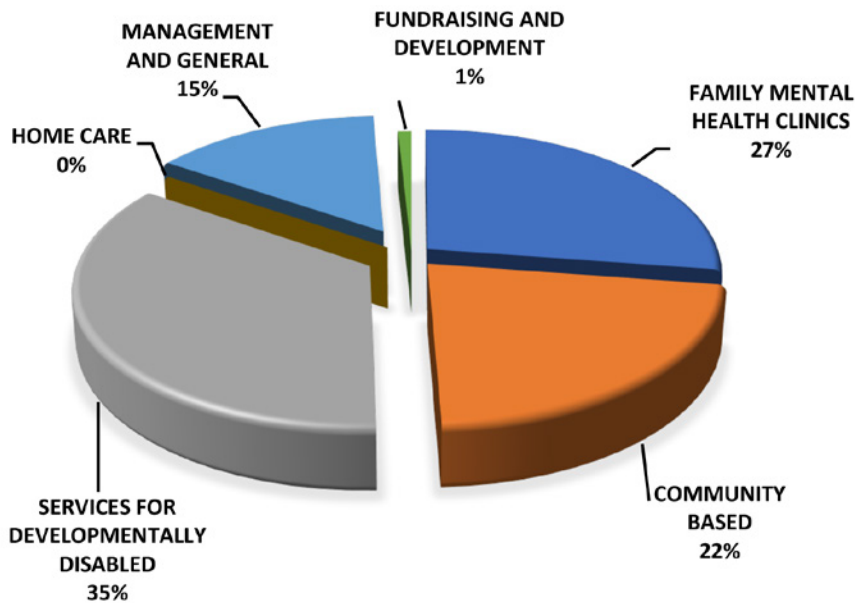
	2022	2021
ASSETS		
CASH AND CASH EQUIVALENTS	1,829,739	1,295,981
RECEIVABLES	6,394,403	7,135,755
INVESTMENTS	32,246,246	38,343,454
LEASE RIGHT-OF-USE ASSETS	1,695,361	1,985,741
PROPERTY AND EQUIPMENT, NET	7,656,005	7,617,561
OTHER ASSETS	504,615	398,015
TOTAL ASSETS	50,326,369	56,776,507
LIABILITIES		
ACCRUED EXPENSES AND OTHER PAYABLES	6,021,139	6,307,838
PAYMENT PROTECTION PROGRAM LOANS PAYABLE	6,142,767	6,142,767
LEASE LIABILITIES	1,823,902	2,136,186
LOANS PAYABLE	2,431,966	2,752,870
TOTAL LIABILITIES	16,419,774	17,339,661
NET ASSETS		
WITHOUT DONOR RESTRICTIONS	14,366,983	16,575,100
WITH DONOR RESTRICTIONS PURPOSE	14,989,731	17,682,716
WITH DONOR RESTRICTIONS ENDOWMENTS	4,549,881	5,179,030
TOTAL NET ASSETS	33,906,595	39,436,846
TOTAL LIABILITIES AND NET ASSETS	50,326,369	56,776,507

WESTCHESTER JEWISH COMMUNITY SERVICES AND AFFILIATES COMBINED STATEMENTS OF ACTIVITIES FOR THE YEAR ENDED JUNE 30, 2022 AND 2021.

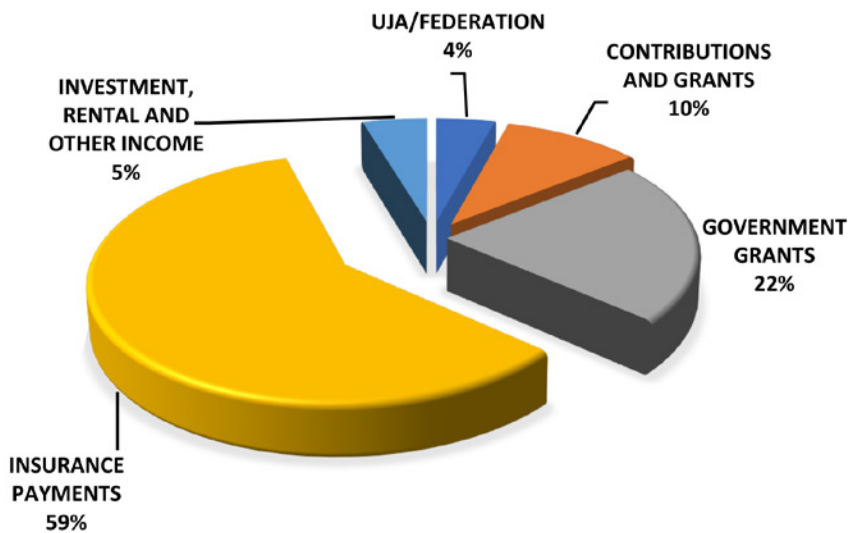
SUPPORT AND REVENUE—OPERATING PUBLIC SUPPORT	2022	2021
UJA/FEDERATION	1,895,065	2,115,485
CONTRIBUTIONS AND GRANTS	4,458,912	4,685,320
SPECIAL EVENT NET OF EXPENSES	369,487	348,642
TOTAL PUBLIC SUPPORT	6,723,464	7,149,447
REVENUE		
GOVERNMENT GRANTS	9,869,434	6,766,223
PROGRAM SERVICES FEES	26,322,646	27,107,527
INVESTMENT INCOME	1,353,227	2,387,460
RENTAL AND OTHER INCOME	358,016	314,066
TOTAL REVENUE	37,903,323	36,575,276
TOTAL SUPPORT AND REVENUE	44,626,787	43,724,723
EXPENSES - OPERATING:		
PROGRAM SERVICES – CLINIC	12,397,591	10,100,896
PROGRAM SERVICES – COMMUNITY BASED	9,983,399	10,301,096
PROGRAM SERVICES – SERVICES FOR DEVELOPMENTALLY DISABLED	15,897,521	14,398,440
PROGRAM SERVICES – HOME CARE	116	281,856
MANAGEMENT AND GENERAL	6,613,365	6,322,556
FUNDRAISING AND DEVELOPMENT	380,643	332,088
TOTAL EXPENSES – OPERATING	45,272,635	41,736,932
CHANGE IN NET ASSETS - OPERATING	(645,848)	1,987,791
NON-OPERATING REVENUE		
UNREALIZED GAIN (LOSS) ON INVESTMENTS	(4,884,403)	5,816,226
CHANGE IN NET ASSETS	(5,530,251)	7,804,017

The complete audited financial statements including related notes and the Galleros Robinson, LLP opinion as independent auditors, may be obtained by writing to Westchester Jewish Community Services, 845 North Broadway, White Plains, NY 10603 or to the New York State Department of Law, Charities Bureau, 120 Broadway, New York, NY 10271. WJCS has met all standards of the Better Business Bureau Philanthropic Advisory Service and is listed in the New York Giving Guide. Our IRS Form 990 can be accessed by going to: www.wjcs.com/financial990

OPERATING EXPENSES



OPERATING SUPPORT AND REVENUE



WJCS IS:

- A founding member of Coordinated Behavioral Health Services
- Accredited by the American Psychological Association as a training site for doctoral psychology interns
- Accredited by Substance Abuse and Mental Health Administration for Peekskill, Mt. Vernon, and Yonkers to be Certified Community Behavioral Health Clinics
- An affiliate of Compeer, International
- Certified by Green Business Bureau
- Certified to operate Intermediate Care Facilities, Individualized Residential Alternatives, and Community Residences by the NYS Office for People with Developmental Disabilities (OPWDD)
- Licensed to operate mental health clinics by the NYS Office of Mental Health (OMH), including integrated mental health and substance abuse services
- Rated as meeting all standards by the Better Business Bureau of New York

WJCS CONTRACTS WITH OR RECEIVES PROGRAM SPECIFIC SUPPORT FROM:

- City of Yonkers Community Development Block Grant (CDBG)
- Federal Emergency Management Agency
- Joe Torre Safe at Home Foundation
- Montefiore Hospital DSRIP
- New York State Department of Health
- New York State Division of Homeland Security and Emergency Response
- New York State Office for People with Developmental Disabilities
- New York State Office of Children and Family Services
- New York State Office of Mental Health
- New York State Office of the Aging
- Center for Practice Innovation at the New York State Psychiatric Institute
- Putnam/Northern Westchester Board of Cooperative Education (BOCES)
- School Districts of Briarcliff, Chappaqua, Elmsford, Harrison, Mt. Vernon, New Rochelle, Ossining, Peekskill, Tarrytown/Sleepy Hollow, White Plains and Yonkers
- Sun River Health Care
- Town of Cortlandt
- U.S. Department of Education
- U.S. Department of Health & Human Services
- U.S. Department of Housing & Urban Development
- U.S. Department of Justice
- Westchester County Board of Legislators
- Westchester County Department of Community Mental Health
- Westchester County Department of Probation
- Westchester County Department of Senior Programs & Services
- Westchester County Department of Social Services
- Westchester County Office for Women
- Westchester County Office of the County Executive
- Westchester County Youth Bureau

EXECUTIVE STAFF

Seth Diamond, Chief Executive Officer
 Lauren Bassin, LCSW, Assistant Executive Director, Community Programs
 Suzanne DeLasho, LCSW, Director of Behavioral Health Services; Project Director, Certified Community Behavioral Health Clinics
 John Douglas, M.D., M.B.A., MA., Medical Director
 Richard Jones, B.A., Compliance Officer; Director, Quality Improvement
 Patricia Lemp, LCSW, Chief Clinical Officer
 Susan Lewen, B.A., Chief Development Officer
 Clive Mascarenhas, B.S., Chief Technology Officer
 Irene Math, B.S., Chief Financial Officer
 Liane Nelson, Ph.D., Chief Psychologist; Director, Trager Lemp Center: Treating Trauma & Promoting Resilience
 Gillian Rittmaster, LCSW, Assistant Executive Director, Jewish Programs
 Milagros Rivera, MBA, Director, Human Resources
 Katrina Schermerhorn, MPA, Assistant Executive Director, Children, Youth and Family Services
 Shannon Van Loon, M.Ed., Chief Program Officer

LEADERSHIP/ADMINISTRATIVE STAFF

Janet Alpert, M.A., Director of Residential Services, Community Programs
 John Alterman, LCSW, Director, Hartsdale Family Mental Health Center; Director, Educational Institute
 Beverly Alvarez, M.S., Director, Academic and Career Support, Mary J. Blige Center
 Patricia Alvarez, LCSW, Supervisor, Project Director, NCTSI Trager Lemp Center: Treating Trauma & Promoting Resilience, Project Director, National Child Traumatic Stress Initiative
 Miriam Arond, M.A., Director of Marketing and Communications
 Alissa Koerner-Balbaki, LCSW, Director, Yonkers Family Mental Health Clinic; Coordinator, Employee Assistance Program
 Maria Bergamin, LCSW, Coordinator, SCOPES
 Shari Birnbaum-Baum, LMSW, Coordinator, Partners in Caring
 Ann Brammer, LCSW, Director, Mt. Vernon Family Mental Health Clinic; Coordinator, Social Work Internships
 Monica Brennan, LMSW, Supervisor, Yonkers DDO
 Merydith Browne, Residence Manager, Palmer House
 Ashley Cabrera, LCSW, Coordinator, DSS
 Rodney Campbell, B.S., Residence Manager, Maple House
 Anthony Canonico, LMSW, Director, OnTrack, NV
 Danielle Cartwright, LMSW, Coordinator, POINT
 Ralph Capozzi, Senior Facilities Director
 Ebony Carelock, M.Ed., Director, Wiener Academy for Young Women, Mary J. Blige Center
 Hanna Cohen, PsyD, Psychologist, Trager Lemp Center: Treating Trauma & Promoting Resilience
 Cheoka Coleman, LMSW, Assistant Program Director, Family Matters
 Krystle Colon, LPN, Supervising Licensed Practical Nurse, Yonkers Family Mental Health Clinic
 Luis Contreras, B.A., Senior Budgets Manager
 Kevin Costello, Social Club Coordinator
 Hope Cunningham, MPA, Coordinator, Community Programs
 Sheri Curro, Client Information Systems Manager
 Zoila De La Rosa, Residence Manager, Gramatan House
 Diana Dlugash, M.S., Director of Client Information Systems & Strategic Initiatives
 Suzanne Doll, LMSW, Director, Linkages and Youth Success
 Timothy Dudic, B.A., Director of Grants
 Leroy Ennis, LCSW, Director, Yonkers School-Based Services
 Mary Esposito, Senior Office Manager
 Judy Fink, LCSW, Director, Senior Care
 Sarah Fisher, LCSW, Clinical Coordinator/Director, Mobile Crisis Response Team, OnTrackNY
 Janee Frankel, Residence Manager, Claremont
 Kendra Fray, B.A., Residence Manager, Valda House
 Stefanie Noll Gasper, MSW, Coordinator, Margaret's Place
 Rabbi Michael Goldman, M.A., Coordinator of Spiritual Healing Center and Community Rabbi
 Rivka Gorin, B.S., Assistant Director, Parent Child Centers and Virtual Programming
 Wilhelminia Harris, B.S., Coordinator, Peer Services
 Zilah Gradwohl, M.S., Supervisor, Harry and Jeanette Weinberg Learning Center
 Barbara Greene, MPH, Director, POINT Program
 Patricia Grossman, LCSW, Director, Outpatient Services for the Developmentally Disabled
 Consuelo Guerrero, LCSW, Supervisor, Yonkers Trager Lemp Center: Treating Trauma & Promoting Resilience, Latino Community Liaison
 Brenda Haas, LMSW, M. Ed, Coordinator, Guiding Parents Through Services (GPS)
 Sasha Hanchard, Residence Manager, Beach House
 Wilhelminia Harris, B.S., Coordinator, Peer Services
 JoAnne Helffrich, LCSW, Assistant Director, Peekskill Family Mental Health Clinic
 Rachel Held, Ph.D., Coordinator, Psychology Externship Program, Intensive Outpatient Program (IOP)

Gayley Henry, B.S., Coordinator, Community Programs
 Leslie Hernandez, Director of Admitting and Managed Care
 Dawn Jardim, Residence Manager, Harrison House
 Nancy Keane, B.B.A., Grants Manager
 Diane Klein, Coordinator, Behavioral Services & Training Support
 Carol Kobroff, MSW, Coordinator, Project Time-Out
 Veronica Lalomia, Payroll Supervisor
 Valerie Litt, LCSW, Supervisor, Nursing Home Transition and Diversion/Traumatic Brain Injury Service Coordination
 Catherine Kunin, LCSW, Coordinator, SCOPES
 Caitlin Leon, LMSW, Coordinator, Young People Achieve
 Norma Leon, B.A., Human Resources Manager
 Christopher Libby, Ph.D., Assistant Director, Hartsdale Family Mental Health Center; Coordinator, Dialectical Behavioral Therapy
 Norma Litman, LCSW, Supervisor, Outpatient Services for the Developmentally Disabled
 Alexandra Luciano, M.A., Associate Manager, Volunteers & Events
 Micheline Malow, Ph.D., Director, Harry and Jeanette Weinberg Learning Center
 Erika Manber, M.A., Coordinator, VPA
 Rajendra Mangal, Director of Financial Planning, Reporting and Reimbursement
 Soleil Manon, MSW, Coordinator, Cross Hill
 Geovanny Martinez, LMSW, Assistant Director, Mt. Vernon Family Mental Health Clinic
 Ericka McCabe, A.S., Residence Manager, Hudson Terrace
 Mike McCabe, Supervisor, Information Services
 Kathleen E. McKay, Ph.D., Coordinator, Court Assessment Program
 Alice Melcone, M.S., Director of Training and Compliance, Community Programs
 Phillip Menzies, M.S., Director of Youth Services
 Kristina Mirra, LCSW, Assistant Program Director, Mobile Crisis Response Team
 Catherine Mitchiner, Residence Manager, Bon Air House
 William Mullane, Ph.D., Director, Innovation, Integration, and Community Partnerships
 David Munroe, Operations Coordinator, Community Programs
 Carolyn Murphy, LCSW, Director, Children's Community-Based Mental Health Services
 Alyssa Neary, Psy.D., Assistant Director, Harry and Jeanette Weinberg Learning Center
 Deirdre O'Sullivan, M.S., Assistant Controller
 Dorothy Oswald, RN, Nursing Supervisor, Community Programs
 Tally Alphas Palefski, LMSW, Associate Director, Early Step Forward
 Sandra Perry, B.A., Residence Manager, Claudet House
 Isabel Pettersen, M.S., Program Manager, Youth and Senior Project Lifesaver
 Jennifer Peterson, B.S., HR Generalist
 Jessica Piecyk, MSW, Director, Early Childhood Programs
 Jill Phillips, BSN, RN, Director, Nursing Services
 Sally Pinto, Director, Yonkers NNORC
 Colleen Porrazzo, Executive Assistant and Psychology Internship Coordinator
 Maura Rawlins, LCSW, Coordinator, Margaret's Place
 Areta Reid, B.A., Residence Manager, Cannon House
 Erica Rice, B.A., Revenue Accounting Manager
 Tamara Robinson, BA, Coordinator, Early Childhood Division, Yonkers
 Josefa Romero, MSW, Program Director, CVASSP
 Valerie Rosen, LCSW, Director of Integrative Services, Certified Community Behavioral Health Clinics
 Karen Rosenthal, B.S., Controller
 Karen Santos, B.S., Advocate Supervisor, CVASSP
 Alison Savitch, LCSW, Director of Community Support Services, Community Programs
 Rachel Scherer, M.S., Privacy Officer
 Lisa Scott, B.A., Director of Programming, Innovation and LGBTQ Services
 Robyn Schlesinger, J.D., Associate Development Director
 Jane Slevin, M.S., LMFT, Director, Pathways to Care
 Elana Spira, Ph.D., Director, Research
 Laura Stein, LMSW, Coordinator, COMPEER
 Rosemarie Stewart, B.S., Coordinator, Community Programs
 Dorothy Thompson, MSW, Assistant Director, Home Visiting
 Elizabeth Thompson, LCSW, Director, Margaret's Place
 Sylvana Troubat, LCSW, Assistant Director, Trager Lemp Center: Treating Trauma & Promoting Resilience; Coordinator, Partner Abuse Intervention Program
 Shedifa Treasure, BSW, Coordinator of Integrative Services, Certified Community Behavioral Health Clinics
 Amanda Vassallo, LCSW, Clinic Director, Peekskill Family Mental Health Clinic
 Troy Walker, Residence Manager, Bryant
 Ellen Weisberg, M.Ed., LMSW, Coordinator Covid Relief Hub, Mental Health Service and Project Seed, Jewish Programs
 Heidi Weiss, LMSW, MHA, Coordinator, Addressing Alzheimer's
 Shema Etienne Williams, B.A., Account Receivables Supervisor

wjcs PROGRAMS

BEHAVIORAL HEALTH

Care Management for Youth

Community-based services for children with chronic health or mental health conditions, 914-237-6089

Certified Community Behavioral Health Clinics (CCBHC)

Counseling, psychiatric, Intensive Outpatient, peer and educational support, resource referrals, and other services for adults and children

- **Mt. Vernon**, 914-668-8938
- **Peekskill**, 914-737-7338
- **Yonkers**, 423-4433 x3224

Child Sexual Abuse Treatment Program*

Treatment for children and adult survivors of sexual abuse, 914-949-7699 x2475

Court Assessment Program

Professional psychiatric and psychological assessments for use by the legal system, 914-949-7699 x2452

Craft

Services for concerned significant others of substance-involved individuals, 914-761-0600 x3221

Cross Systems Unit*

A collaboration with DSS to assist families seeking Family Court help, 914-423-4433 x3222

Domestic Violence Program*

Therapy for adults and children affected by family violence, 914-949-7699 x2471

Encompass

Services for substance-involved individuals, including individual and family therapy, 914-761-0600 x3221

Family Matters

Mental health services, case management for youth with serious emotional disturbances, 914-237-6089

Harry & Jeanette Weinberg Learning Center

Educational services for individuals with developmental disabilities and other learning challenges, 914-949-7699 x2464

**Part of WJCS Trager Lemp Center for Treating Trauma & Promoting Resilience*

Hartsdale Family Mental Health Center

Counseling, psychiatric, specialty, and Intensive Outpatient Services in clinic setting for adults and children, 914-949-6761 or 914-949-7699

Juvenile Fire-Setting Evaluation and Treatment Program

Assessments of children at risk of fire-setting, education for parents and the community, 914-237-6089

Juveniles Starting Over*

Treatment and assessment of youth with problematic sexual behavior, 914-949-7699 x2470

Linkages/Youth Success*

Mental health assessment and support for youth in the probation system, 914-737-7338 x3120

Mobile Crisis Response Team

Crisis stabilization services offered in partnership with police in Peekskill, Cortlandt, Croton, Buchanan, and Yorktown, 914-523-4099

Nurturing Parents*

A support group that provides trauma-informed, preventative, educational workshops and comprehensive support for women and their young children affected by domestic violence, 914-423-4433 x3221

ONTrackNY

Specialized program, including counseling, psychiatric, peer, and educational/employment support, for individuals age 16-30 who have experienced first episode psychosis, 914-737-7338 x3122

Peekskill School-Based Satellite Clinics (SCOPEs)

School-based mental health services for Peekskill schools:

- **Woodside Elementary school**, 914-734-1359
- **Oakside Elementary School**, 914-737-1591

Social Clubs

Provides social and recreational activities for people recovering from mental illness, 914-528-6995

- **Favonian Club** in Shrub Oak
- **Grasslands** life skills program in Valhalla

- **Sunset Club** for residents of Mohegan Park Home
- **Sunshine Social Club** in Shrub Oak

Trager Lemp Center: Treating Trauma & Promoting Resilience

Research-proven treatment for childhood sexual abuse and trauma, 914-949-7699 x2475

Trauma Therapist at District Attorney's Office*

914-995-5165

VIP (Volunteer Internship Program)

Adults over age 18 who are recovering from mental illness are placed in volunteer positions at WJCS and other non-profit agencies in Westchester, 914-761-0600 x2223

Whitehill Counseling Service

Fee-supported mental health services, 914-737-7338 x3119

WJCS Satellite Clinic @ Sun River HealthCare

Mental health services for children in a pediatric practice, 914-423-4433

Yonkers Department of Social Services

Satellite Clinic crisis intervention and counseling to families involved with DSS, 914-231-2604

Yonkers Family Mental Health Clinic

Counseling, psychiatric specialty, and Intensive Outpatient Services in clinic setting for adults and children, 914-423-4433

Yonkers School-Based Satellite Clinics:

Mental health services for Yonkers schools: Cross Hill Academy, Martin Luther King Academy, Roosevelt High School, and School 18, 914-376-8174

Yonkers School-Based Crisis Stabilization Services

Short-term mental health, crisis management services to several Yonkers schools, 914-330-7961

Youth, Teen & Adult Mental Health First Aid Training

Teaches warning signs to respond to mental health challenges and crises, 914-761-0600 x2322

CHILDREN/FAMILIES

Academic and Career Support

Adult basic education, TASC (formerly GED) prep, and job readiness, 914-965-9140 x23

Center Lane

Community center, resources, and support for LGBTQ+ youth, Yonkers, 914-423-0610

Crime Victims Advocacy Support Services Program (CVASSP)

Provides crime victims and survivors with supportive services and trauma-informed therapeutic services, 914-761-0600 x2245

Digital Equity

Provide Chrome books, internet access, and digital education to help youth and adults succeed at remote learning, 914-949-7699 x2407

Early Step Forward

Food supplies funded by contributions from synagogues and organizations, located at the Mary J. Blige Center in Yonkers, 914-965-9140

Emergency Food Pantry

Early childhood mental health services for families with children up to age 5 at schools, childcare programs, and in the community. Includes Family Child Care Provider Program, 914-949-7699 x2407

Envision

Provides mentoring, care management, and supportive services to high-school students who are WJCS clients, 914-965-9140 x29

Infant-Toddler Learning Center

Parenting education and children's early learning, 914-965-9140 x14

Margaret's Place

In-school violence prevention, intervention, and education in partnership with the Joe Torre Safe At Home Foundation, 914-949-7699 x2481

- **Cross Hill Academy**, Yonkers
- **Peekskill Middle School**
- **White Plains High School**

(continued)

Parent-Child Center (PCC) / ParentChild+

PCC offers a fully-equipped drop-in center with toys, music, and more in New Rochelle. ParentChild+ provides home visits with child development expert who teach parenting skills, early literacy, and child development. 914-949-7699 x2424

Peer Impact

Peer-to-peer support and training to develop youth leadership and advocacy skills, 914-761-0600 x2322

Wiener Academy for Young Women

After-school girls' academic and personal development and enrichment, 914-965-9140 x3

Young People Achieve

In-school pregnancy prevention and intervention for teens

- **Ossining High School**, 914-762-5760 x2352
- **Sleepy Hollow High School**, 914-333-0063
- **White Plains High School**, 914-422-5026

DEVELOPMENTAL & INTELLECTUAL DISABILITIES/ AUTISM

Community Habilitation Services

Essential life-skills training for individuals in the POINT program, 914-761-0600 x2175

CORDD

Crisis support for people with developmental disabilities or autism who are experiencing non-life threatening situations, 914-949-7699 x2455

Counseling for People with Developmental Disabilities

Mental health services for individuals and families with developmental disabilities, including autism, 914-949-7699 x2455

Parent Management Training

Support for parents in managing difficult behaviors of children with developmental disabilities or autism, 914-949-7699 x2408

POINT

Community independent living program for young adults with intellectual and developmental disabilities, 914-761-0600 x2175

Project Lifesaver

Provides locator bracelets for people with autism who may wander, 914-761-0600 x2230

Residential Housing

Supervised and supportive living opportunities certified by New York State OPWDD for individuals with Intellectual and Developmental Disabilities. 914-761-0600 x2128

- **Beach House**, Mamaroneck
- **Bon Air House**, New Rochelle
- **Bryant House**, White Plains
- **Cannon House**, Eastchester
- **Chai House**, White Plains
- **Claremont House**, Mt. Vernon
- **Claudet House**, Eastchester
- **Gramatan House**, Mt. Vernon
- **Harrison House**, Harrison
- **Hudson Terrace**, Sleepy Hollow
- **Maple House**, Harrison
- **Palmer House**, Larchmont
- **Valdale House**, Yonkers

Social Skills Lunch Group

Weekly therapeutic get-together to problem solve and socialize, 761-0600 x2477

Taft Community Center

A space for social, educational, and vocational activities for young adults and adults with developmental disabilities. 914-761-0600 x2108

Therapeutic Social Groups

Evidence-based groups for children and teens with autism, 914-761-0600 x2477

JEWISH PROGRAMS

Addressing Alzheimer's

Support for people with Alzheimer's and other forms of dementia as well as their caregivers, 914-761-0600 x2144

Bereavement Services

Support for those coping with the loss of a loved one, 914-761-0600 x2142

Caregiver Support

Assistance for individuals caring for a loved one living in Westchester over the age of 60, 914-761-0600 x2143

Center for Jewish Programs

Counseling, support, and spiritual programs for the Jewish community, 914-761-0600 x2142

Guiding Parents through Services (GPS)

Connects Jewish families to behavioral health services for children, 914-761-0600 x2318

Havurah Program

Jewish holiday celebrations for people with developmental disabilities, 914-761-0600 x2142

Holocaust Program

- Groups for Holocaust survivors and their families, 914-949-7699 x2541
- Survivor compensation programs, including home health care. 914-761-0600 x2241

Jewish Spiritual Healing Center

Programs providing support through Jewish traditions, 914-761-0600 x2149

Kosher Home-Delivered Meals

Provides kosher meals to isolated seniors, 914-761-0600 x2184

Partners in Caring and Partners in Schools

On-site counseling, educational and informational programs in synagogues and Jewish day schools, and community and senior centers, 914-761-0600 x2145

Pathways to Care

Counseling for people coping with chronic or advanced illness, 914-761-0600 x2143

Project Locator

Provides location bracelets for people with Alzheimer's and other related dementias, 914-761-0600 x2230

Project SEED

Provides support for teachers and parents in Jewish early childhood centers, 914-761-0600 x2146

Shelanu

A membership community for young Jewish adults with autism, 914-761-0600

SENIORS

Livable Communities Project

Helps seniors remain in their homes and communities, 914-761-0600 x2314

Project Time-Out

Provides respite for caregivers, 914-761-0600 x2310

Senior Care Management

Comprehensive services for seniors, including living options, 914-761-0600 x2340

Senior Information and Referral

Provides information on programs, services, and benefits for seniors, 914-761-0600 x2340

Yonkers NNORC (Neighborhood Naturally Occurring Retirement Communities)

Assistance to help seniors in northeast Yonkers age in place, 914-761-0600 x2344

RESEARCH/ TRAINING

Social Work Internship

Accredited training program for first and second-year graduate students from schools of social work for field work placements, 914-668-8938 x3014

Psychology Externship Training

Accredited training program for doctoral candidates, 914-423-4433 x3213

Psychology Internship Training

Accredited training program for advanced doctoral students, 914-949-7699 x2475

Educational Institute

Courses, workshops, conferences, and lectures for WJCS staff and the community at large, 914-949-7699 x2474

Research and Evaluation

Data collection, analysis, and quality control to ensure WJCS programs and services use evidence-based practices, 914-761-0600 x2234

VOLUNTEERING

COMPEER

Volunteers helping adults recovering from mental illness, 914-761-0600 x2208

Recruitment

A wide range of in-person and virtual opportunities for volunteers, including virtual mentoring, 914-761-0600 x2222

VIP

Volunteer/internship experience for adults recovering from mental illness, 914-761-0600 x2223



THANK YOU TO OUR GENEROUS DONORS

INDIVIDUALS

Amy Aaron

Sydell Aaron

Judy Shandling and

Dr. Elie Abemayor

Linda Aboody

Alison and David Abrams

Anne and Ronald Abramson

Anita Absey

Kimberly and Kenneth Ackerman

Samantha Acunto

Caroline Adillon

Leslie and Joshua Adler

Lindsay Adler

Tina and Clifford Adler

Jackeline Agudelo

Anne Alben

Brenda Haas and Richard Albert

Lauren and Andrew Albert

Jeffrey Aldridge

Catharine Alexander

Leslie and David Alpert

Joyce Altman

Laurie and Mark Altmann

Beverly Alvarez

Louis Amaru

Vincent Ambroselli

Susan Amkraut

Michael Amundsen

Amy and Adam Arshen

Lil Anguilm

Helen and Robert Appel

Uri and Judy Aqua

Margaret Arancio

Abby and Michel Araten

Rosemary Rogers and

Robert P. Arbucci

Cindy Arnold

Leanne and Joel Arnow

Marjorie and Jim Arsham

Rebecca and Stephen Ascher

Robert Ascher

Marcia and Nathan Assor

Keith Auerbach

Susan Goldberger and

Stewart Ault

Josh Avidan

Joy and Avraham Avidan

Emily Baccaglini

Melissa and Herbert Baer

Lynn and William Bagliebter

Michael Bagliebter

Bobbi Leis Baker and

Simon Baker

Christine Balascio

Howard Ball

Judith and Jason Balsan

Dmitry Balyasny

Timothy Banach

Laura Bandler-Vollmer

Carrie and Andrew Bank

Margaret Barbarino

Harriet and Kenneth Barish

Andrew W Barrer

Steven and Martha Barrett

Judy Seiff and Joel Barth

Myrna Barzelatto

Babette and Dr. Michael Basista

Mindy and Dan Bass

Jane and Alan Batkin

Shari and Arnie Baum

Talia Baurer

Edna and Ernst Bechhofer

Amanda and Steven Beckman

Shari and Joel Beckman

MaryAnne Beier

Rebecca Belford

Maxine Bellus

Susan Benenson

Froma and Andrew Benerofe

Helena and Mark Benerofe

Idie Benjamin

Brenda and Michael Benn

Laurie and Bruce Berg

Maria Bergamin

June Fox and Arnie Berger

Rachel Berger

Randy Stein and Jack Berger

Trisanne and Samuel Berger

Jeffery Berger-White

Amy Nadel and Peter Berke

Beth Berke

Elisabeth Ehrich and

Alan Berkeley

William Berkowsky

Phyllis and Peter Berland

Marilyn and Morton Berman

Jill Bernier

Daniel Bernstein

Joanne and Mitchell Bernstein

Lori and Brett Bernstein

Nadia Bernstein

Nancy and Steve Bernstein

Deborah Bers

Dalya Khan and Preet Bharara

Mindy Biegelman

Susan and Charles Biener

Gail Alexander Binderman

Bobbi Bittker

Jordan Black

Sarah Black

Brenda and Charles Block

Anita Bloom

Karen Bloom

Rishana, Aaron, and Izaac Bloom

Ben Blumberg

Joyce and Robert Blumberg

Mariquita and Matthew

Blumberg

Michael and Sheila Blumberg

Nina and Philip Blumenfeld

Karen and David Blumenthal

Pamela Bodley

Dr. Leslie Bogen

Betsy and Nathaniel Bohrer

Jodi and Dr. John Boockvar

Anita and Randall Borkenstein

Erinn Boyle and Alex

Mayral Blanco

Andrea and John Brandt

Diane Brawarsky and

William Cherkin

Susan W Brecher

Jodi and Gary Breitbart

Gilbert Breitberg

Marsha and Gilbert Breitberg

Candace Brennan

Michele and Fred Brettschneider

Jennifer Brevaire

Eileen Livers and Paul Brinberg

Blakely and Marty Brodbeck

Jody Brody

Dotty Brust

Joy and Steve Bunson

Karen and Marc Bushell

Robert Byrne

MacKenzie Cadenhead

Laura Caligor

Beverly Cannold

Nancy and Michael Cardozo

Lauri and David Carey

Thomas Carlin

Miriam Carlitz

Joseph Carlucci

Carnell Associates

Caryl and Malcolm Lazarus

Jeri and Andy Casden

Colleen Cassidy

Alison Yaffie and David Cautin

Mary Cavalluzzi

Carole and Ronald Chaimowitz

Judith Chananie

Chanda Carroll and

Joseph DelVecchio

Deborah Chapin

Andrew Charles

Rosanne and Matthew Charms

Glenda Chernoff

Rhonda and Daniel Chestler

Camilla Jantke-Chiappari and

Ted Chiappari

Laura and Alexander Chilton

Lucia Chiochio

Frances and Arthur Citrin

Joanne and Barry Citrin

Lois Kohn-Claar and Gary Claar

Neil Clark

Audrey Prashker and

Alexander Clarke

Susan Code

Debbie Coffina

Ellen A Cogan

Daniel Cohen

Ellen Brooks and Marshall Cohen

Emily and Richard Cohen

Gerald Cohen

Janine Marlowe and David Cohen

Karen and Howard Cohen

Lisa Cohen

Louise Albin and Susan Cohen

Louise and Robert Cohen

Marci and Jeremy Cohen

Rosalyn Cohen

Stefani and Gerry Cohen

Gail Cohen-Lefkovic

Ellen Biblowitz and Richard Cohn

Joan Kirschenbaum Cohn and

Peter Cohn

Michelle and Thomas Coleman

Krystle Colon

Sharon Cooper

Lawrence Cooperman

Susi and Scott Coplan

Judith Coppola

Carol and Herbert Corbin

Mallorie Corcoran

Fran Cory

Betty and Stuart Cotton

Tamika Coverdale

Brooke Cowen

Miriam Crandall

Toby Crystal

Robyn Cue

Nora Cullen

Anna and Greg Cuneo

Randi and Roger Cunningham

Nancy Dadamo

Kurt Dalton

Lillian Daniel and

Melanie Daniels

Allison Danzig

Peggy and Russell DaSilva

Talya and Aron Davidowitz

Joel Davidson

Sara Davidson

Diane Rosenthal and Mark Deitch

Suzanne Santana-DeLasho and

Patrick R DeLasho

Carole Delgado

Jennifer DeMarrais

Smriti Deshmukh

David Diamond

Dr. Marsha Diamond

Eunice and Stephen Diamond

Helene and Seth Diamond

Abbe Dienstag

Grace DiMaira

Karen DiMicelli

Jenny and David Dinoff

Laurie Disick and Jeffrey Allister

Adrienne Dijlani

Alan Dlugash

Brian Dlugash

Diana Dlugash

Gail and Laurence Dobosh

Arlene and Avrom Doft

Suzanne Doll

Amy Dorf

Wendy and Robert Dorf

Giovanna and David Downs

Karen Drogin

Leslie Dubin

Kenneth and Paula DuBroff

Gail Duncan

Lori and Rob Dver

Patricia and Michael Dweck

Riva Edelman

Tova and Barry Effron

Kate and Scott Eichel

Lori and Larry Eichenfield

Linda and Michael Eigner

Rebecca and Martin Eisenberg

Lisa and Stephen Eisenstein

Rabbi Shira Milgrom and

David Elcott

Audrey and Jeffrey Elliott

Anne and Marc Ellman

Marilyn Entwistle and Paul Dinter

Laurel Coben and Travis Epes

Diana and Salvatore Eppolito

Erica Eppolito

Tami Escobar

Ruth Waldfogel Fahrback and

Fred Fahrback

Rhyrus Falcone

Debbie and Paul Farfel

Jackie Farrell

Minda Feinberg

Phyllis Feinberg

Susan Feir

Frani Feit

Mindy and Andrew Feldman

Jane Veron and Andrew Feldstein

Jessica and Garrett Fenton

Joanne and Duane Fiedler

Judy and Steven Fink

Carol and Harold Finkel

Phyllis and Frank Finkelstein

Elaine Finsilver

Eva Jane Fischer

Jill Fischer	Madeleine George	Zilah Gradwohl	Diane and Mark Holland	Rosalind and Gary Karlitz
Lois Fischman	Susan Gerbino	Joni Sweetwood and	Wendy Hollander	Juli and Daniel Karson
Allison Fisher	Lisa and Jeff Gerson	Howard Gralla	Phyllis Honig	Leslie and Richard Kaskel
Cynthia and Gregg Fisher	Susan Lerich Gersten	Yvette Gralla	Lisa Hope	David Kasman
Rabbi Jessica Fisher	Robin Gibbs	Emily Grant	Ellen and David Horing	Loryn and Michael Kass
Roberta and Robert Fisher	Judy and David Gilbert	Joan Grant	Ann Horowitz	Ronald Katter
Fran and Gil Fishman	Michael Gilbert	Steve Grant	Barbara and David Horowitz	Arlene Katz
Derek Flanagan	Susan and Adam Gilbert	Helene and Richard Gray	Dr. Heather Mazursky-Horowitz	Helene and Howard Katz
Avi Flax	Carmen Caneda and	Dr. Debra and Stuart Green	and Benjamin Horowitz	Leslye and Gary Katz
Dolya Fleck	Richard Gilfillan	Peter Green	Carlla Horton	Paula and Eric Katz
Meira and Thomas Fleisch	Henry Gilman	Peggy Greenawalt	Christine and Roy Howard	Sheila Aisenman-Katz and
Edward Fleischman	Carol Gingold	Emily and Andy Greenberg	Ginny and Douglas Hyde	Richard Katz
Donald Fleishaker	Joan and Samuel Ginsburg	Barbara and Paul Greene	Patricia and William Hyman	Susan Katz
Rachel Scherer and Robert Fligel	Laurie and Stephen Girsky	Linda and Howard Greene	Rachel Hyman	Courtney and Josh Katze
Deborah Flood	Penny Shima Glanz and	Morgan Greene	Rena and Joseph Hyman	Ann and John Kaufman
Vernal Ford	Daniel Eli Glanz	Laura and Scott Greenfield	Carla and Philippe Ifrah	Linda and Steve Kaufman
Michael Forman	Ruth and Robert Glass	Art Greenwald	Charles Ingber	Rosalind and Richard Kaufman
Samuel Forman	Carol and Morris Glassman	Diane and Marc Greenwald	Roxann Intriligator	Beth and Gene Kava
Ellen and Kenneth Forrest	Amanda and David Glattstein	Joyce Ann Burman and	Anita and Richard Inz	Karen Carpenter and
Bob Forstbuer	Andrea Glenn	David Greif II	Victoria and Michael Ioff	Paul Kayanian
Douglas Fox	Nada Beth Glick	Kay Griffin	Nili and Nathan Ionascu	Sarah and Bruce Kayle
Anthony Franchini	Susan and Harvey Glick	Laura Grill	Scott Irgang	Gloria Kaylie
Helen Frankel	Lauren Glotzer	Josephine and Cyrus Grillo	Karen and Paul Isaac	Nancy Keane
Shai Franklin	Elaine and James Glover	Nora and Robert Groban	Jackie and Sol Israel	Idana Goldberg and
Cora and Michael Freedman	Courtney Glover	Wayne Groh	Stephanie and Irin Israel	Michael Kellman
Frances Pantaleo and	Judy Gluckson	Elizabeth and Steven Gruber	Julia Issembert	Sandy and David Kellogg
Robert Freedman	Giselle Godoy	Consuelo Guerrero	Lois and Jay Izes	David Kemp
Karen Freedman	Yan Ni and Stephen Gold	Molly Gurny	Elizabeth and Charles Jacobs	Jeanne Kennedy
Laurie and Ken Freeman	Benjamin Goldberg	Judith and Stephen Gutmann	Deborah and Mark Jacoby	Ronnie Kent
Dana and Bruce Freyer	Margot and Barry Goldberg	Alice Hand	Liz and Alan Jaffe	Ana and Ari Kertesz
Monica and David Fried	Ruth Goldberg	Brian Hand	Nilesh Jain	Harriette and Ken Ketover
Sheila and Robert Friedland	Theresa and Keith Goldberg	Donna and Edward Harley	Julie and Bruce Jakubovitz	Seukyung Kim
Yael and Adam Friedland	Dorothy Golden	Audrey and Jerry Harnik	Dawn Jardim	Judith and Bernie Kimberg
Alan Friedman	Emily Golden	Jill and Scott Harris	Eve and Peter Jaskow	Shelly and Howard Kivell
Barbara Friedman	Susan and Jeffrey Goldenberg	Susan and Paul Harris	Phyllis and Henry Jedda	Elyse Mall Klayman and
Lisa and Marc Friedman	Aliza Goldgewicht	Wilhelminia Harris	Leslie Jeris	Barry Klayman
Patricia and Alan Friedman	Ellen Goldin	Barbara and Daniel Harrison	Dennis Jobin	Marlo and Eric Klein
Robin and Seth Friedman	Jessica Goldman	Wendy and Douglas Hart	Euphemia Johnson	Phyllis Klein
Janie and Adam Frieman	Matt Goldman	Evelyn and James Hartman	James Jond	Roseanne Klein
Jon Frieman	Michael Goldman	Elizabeth and Marc Hartzman	Deborah Jones	Susanne Jones and Neil Klein
Deborah Frishman	Patricia Goldman	Karen and Mark Hauser	Donnamarie and Roger Jones	Arlene and Michael Kleinberg
Rosele and Daniel Frishwasser	Sue Ellen and Peter Goldman	Daun Paris Hauspurg	Richard Jones	Laura and David Kleinhandler
Blake and Derek and Zasky	Penny Goldsmith and	Samantha Hedrick	Leslie Josel	Sandra Kleinman
Fronstin	Bob Meyerson	Rhonda and Jim Heisler	Jennifer Josephs	Wendy and Scott Kleinman
Sue and Kenneth Fuirst	DelRene Goldsmith	Rachel and Shai Held	Lorraine and Christopher Judge	Stephen Klepner
Joan Furman	Rabbi Jen Goldsmith and	Ina and David Helfand	Gail Young and Kenneth Jurist	Irina Knaster
David Furstein	Rabbi Howard Goldsmith	Cindy and Randy Heller	Donna and Carl Kaffeman	Victoria Kniewel
Debra and Jeffrey Gabel	Robert Goldsmith	Michael Hellmann	Ellen and Joseph Kaidanow	Alissa Koerner-Baalbaki
Jean Marie and Christoph Gabler	Eric Goldstein	Dawn and Chuck Hendricks	Hannah and Marc Kalikow	Ella and Sam Kohn
Liane Nelson and Todd Gagne	Tara Slone-Goldstein and	Roger Pierce and Sean Herlihy	Marc Kalikow	Arlene and Stuart Kolbert
Jen Galeon	Wayne Goldstein	Rose and Jerome Herschman	Debbie and Bruce Kaliner	Gail Koller
Judith Galina	Cindy and Bennett Golub	Yvette Hershaf	Beth and Joshua Kalter	Naomi Koller
Christine Gallagher	Margarita and Julian Gomez	Debbie Kenyon and Peter Hess	Rhonda and Calvin Kamien	Michele and Kevah Konner
Jeffrey Gallo	Nancy Gonchar	Jody Heyward	Rachel Kampfer	Juliet and Joshua Konvisser
Doreen and Donald Gallotti	Jayne Lipman and	Alan Himmelstein	Elena and Neil Kanner	Meredith and James Kornreich
JoAnne and Alan Ganek	Robert Goodman	Barbara Hirsch	Michelle and Steven Kanner	Marcia and Michael Korotkin
Nancy Ganz-steir	Ruth Kaplan and Jack Goodwin	Amy and Doug Hirschhorn	Nancy and Adam Kansler	Denise and Jeffrey Koslowsky
Katiana Garcia	Amy Susan Gordon	Jordan Hoch	Anna and Aaron Kantoff	Michael Kramarz
Amanda Garfinkle	Courtney and Ricky Gordon	Stacy Hochberg	Sheila and Laurence Kantor	Maris and Jesse Krasnow
Bonnie and Peter Gatof	Bernadette Gorham	James Hochleutner	Rosemary Kapantais	Ben Krause
Lauren and Michael Gavisser	Erin, Kerry and Kevin Gorman	Pam Hochstin	Karen and Matt Kaplan	David Krause
Ellen and Moshe Gelboim	Deborah Gottheim	Winkie and Alan Hock	Nancy Kaplan	Geri and Daniel Krauss
Wendy and Jeff Gendel	Debbie and Robert Gottlieb	Carol Trager and	Rikki and Barry Kaplan	Nancy and Alan Kraut
	Joan Grace	William Hoeprich	Mary Jane and Tom Karger	Nina and Jeffrey Kravetz

Lois Kroll	Joshua Levy	Chaim and Suzie Marder	Ben and Rotem Miron	Sharon Katz and Kenneth Pearlman
Lynn and Jules Kroll	Marcia Levy and Mark Cannon	Robert Margolies	Brooke Mitchell	Laurie and Randy Pearlman
Anne Krupman	Martha Levy	Phyllis Margolin	Dakota Mitchell	Susan and Michael Pearson
Karen and Mitch Kufflick	Madeline and Michael Lewen	Elizabeth Mark	Ellen Mitchell	Karen and Paul Pechman
Lori and Barry Kupferberg	Sarah Lewen	William Markey	Karen Ganz and Joe Morein	Arthur Peisner
Linda and Robert Kurtz	Susan and Barry Lewen	Cookie and Harris Markhoff	Helen Morillo	Barbara Peist
Carol and Steven Kushnick	Ellen and Paul Lewis	Robin Markowitz	Sharon and Colin Morris	Elizabeth and Frank Pennimpede
Bo Kwok	Emily and Arnold Lewis	Dionne Marks	Renee Morzillo	Marisol Perez
Jerome Lachs	Hilary Lewis	Lisa and David Marmon	Nicole and Michael Moser	Marcia Perman
Linda Lager	Jeffrey Lewis	Elizabeth Marrinan	Wendy and Dan Moskowitz	Sally Perr
Martin LaGuerre	Gloria Lewit	Susan and Kevin Marrinan	Ali Moss	Derek Petak
Laura Laibowitz	Cheryl Birnbaum and Lyle Liberman	Cynthia Martin	Barbara Moss	Isabel Pettersen
Lauren Gold and Corey Laing	Elaine Libman	Jason Martin	William Mullane	Joanne Peyser
Lisa Izes and Jason Laks	Jeffrey Libson	Monica Martinez	Sharon Murphy	Jill Phillips
Erica LaManna	Genette and Bruce Lieb	Brenda Martinez-Brown	Janine Nabers	Gary Philo
David and Elizabeth Landau	Sarah Lieberman	Danit Ben-Ari and Tom Marton	Robin Nack	Phyllis and Andrew Rodman
Eve and Jay Landau	Susan and Peter Liebeskind	Natalia Maselli	Donna and Paul Nadel	Sharon and Irving Picard
Naomi Landesberg	Anita and Stan Liebowitz	Fran Greenberg and Richard Mast	Janet and Paul Nadel	Beverly and Edwin Picker
Sandra Landesman	Deborah Linder	Barbara and Bernard Masur	Patricia Nadolske	Jessica and Walter Piecyk
Lori and Rick Landgarten	Judy and Leonard Lindey	Susan and George Matelich	Bonnie Silverman and David Nanus	Cheryl and Lloyd Pine
Linda Landis	Ellen Linhart	Irene Math	Shiraz and Tazim Nasser	Sally Pinto
Alyson and Kenny Lane	Marion and Melvin Lipetz	Jodi Maxner	Amy Kreisberg and Michael Nathan	Carole Pittelman
Erika and Justin Lane	Debbie Lipton	Heather May	Audrey and Bruce Nathanson	Julie Platt
Ina Lane	Lisa and Stuart Lipton	Daniella Mayer	Tracy and Michael Nathanson	Hillary and Jeffrey Plattus
Stacey Lane	Leslie and Jeffrey Liss	Thomas Mayer	Thomai Natsoulis	Linda and Seth Plattus
Marvin Lange	Lisa Litant	Sandy and Mark Mayo	Arlene and Jay Neveloff	Abby Plotka
Jonathan Langsam	Norma and Nathan Litman	Juliet McArdle	Carolyn Newell	Melissa Plotsky
Ellen and Richard Lask	Margaret and Thomas LoCastro	Ericka and Mike McCabe	Carol and Charles Newman	Carol Polansky-Holt
Carol and Richard Laufer	Elaine and Stephen Loewengart	Karen McCabe	Daniel Newman	Deborah and Alan Polinsky
Debora Laulich	Diane and Don Lombardi	Rena McClain	Sandy and Edward Ng	Ben Poltarak
Jodi Lavitt	Ilyssa and Eric Londa	Rosemary McClare	Amy and Andrew Nichols	Colleen and Kenneth Porrazzo
Ellen and Howard Lazarus	Julie and Marc London	Nicholas McElhinney	Mary Nicolich	Joanne Ruckel and William Potter
Gina Le Done	Jenny Longman	Cathlin McGrath	Maggie Nielsen	Shari and Leonard Potter
Silvia and Mark Lederman	Hallie Lorch	Carol and Ken McHale	Roz Nissman	Jennifer and Michael Povman
Tegan Lee	Karen Lorence	Cathleen Meade	Ann Noone	Alissa Kosowsky and Andy Pressner
Tracey Smith Lee	Lori Rotskoff and Michael Canter	Laurie and Larry Medvinsky	Helen and Ira Nordlicht	Tina and Steven Price
Daniel Leeds	Ellen Reinheimer and Barry Lovell	Garrett Meigs	Stacey and Howard Norowitz	Beth Propper-Rubin
Ilse Lehmeier	Christopher Lowell	Paul Mendelsohn	Lisa Novick	Steve Pruzinsky
Eileen and Peter Lehrer	Michael Lowenstein	Monique and Alan Mensch	Stuart Novick	Amna Qureshi
Mimi and Jules Leibman	Eleanor and Henry Lowet	Robert Mensch	Lauren Thaler and William Null	Ellen and Maidad Rabina
Patricia and Peter Lemp	Donna Lubin	Carol Meola	Alan Nunez	Brooke and Michael Rabinowitz
Miriam and Michael Leo	Alexandra Luciano	Carol Richards Mermey and Steven Mermey	Sally Ocasio-Pinto	Marilyn Rader
Brooke Lerner	Robert Luciano	Yuval Meron	Greg Occhicone	Lesa Rader-Giberson
Elaine Lerner	Diane Lundin	Nicola and Mark Meskin	Karen Occhicone	Leonard Benowich and Ruth Raisfeld
Donna and Richard Leroy	Eileen and James Lusk	Lisa Messinger	Kristine and Mario Occhicone	Susan and Rick Rakow
Leslie and Andrew Lester	Rachel Lustgarten	Ronni Metzger	Tricia Occhicone-Curcio	Kish Ramesar
Dana and Alan Lestz	Alex Lynford	Janice and Jake Meyer	Caroline Kim Oh and Chong Oh	Alexia Ramos
Amy and David Levere	Marion Morgenthal and Lance Lynford	Eileen and Michael Meyers	Elizabeth OLoughlin	Suzi Randolph
Andrew Levin	Julia Gilfillan and Vincent Ma	Deidre Michael	Alysa and Frank Olszewski	Joan Ratner
Leslie Effron Levin and Jason Levin	Jenna Major	Nancy and David Michaels	Caroll Osborne Claps	Meredith Ray
Susanna Levin	Robert Mallow	Debbie and Tom Miglis	Joan Pachner	Alan Raylesberg
Carrie Levine	Micheline Malow	Beverly and Robert Milich	Madeline Packerman	Abigail Reardon
Deborah and Gilbert Levine	Erika Manber	Roberta Miller Bar-Levav	Pam and Michael Schumacher	Gary Reback
Jennifer Levine	Vanessa and Mark Mandel	Anne Miller	Daryl and Dan Paris	Jacqueline Reckseit
Judith Levine	Rajendra Mangal	Lois Frischling and Gerald Miller	Sharon and David Parker	Rhonda and Ken Regan
Marjorie and Michael Levine	Joanna Manheimer	Marjorie Miller	Janet Paseltiner	Robin Reis
Michelle and David Levine	Diane Manley	Rebecca Miller	Crystal Patton	Toby and Robert Reisman
Myra Levine-Harris	Debbie and Robert Marchlewski	Susan and David Miller	Jennifer and Martin Pauker	Ellen and Frank Ress
Alison Levy	Cherie Marcus	Susan and Stephen Miller	Miriam Arond and Dr. Samuel Pauker	Abby and Jeff Reuben
Charles Levy	Emily Laitmon Marcus and Steven Marcus	Teena and Kenneth Miller	Sharon Payne	Danielle Reyman
Cindy and Joseph Levy	Nancy and Lawrence Marcus	Michael Mills		Karen and Chris Riback
Diane Levy		Arlene and Wilfred Minkin		
Jonathan Levy		Kim and Peter Mirabello		

Joseph Riccio	Elise Felix and Howard Rubin	Jennifer and Cliff Seltzer	Vivian and Kenneth Sklar	Ruth and Andrew Suzman
Lori Richards	Ellen G. Kreiger Rubin	Peter Seltzer	Jane and Kenneth Slevin	Daphne Swinton
Patricia Richards	Pam and Paul Rubin	Jill and Robert Serling	Michele Kramer Sloane and Peter Sloane	Marcy Syms
Jessica Riesel	Patricia Ruben	Harriet and Vito Sessa	Deborah and Scott Smith	Andrea and Ken Taber
Ira Rifken	Rabbi Jennifer Jaech and Steve Rubinstein	Sharon and Chris Sevrens	Mary and Ed Smith	Deborah Taeid
Marilyn Kneller-Rimsky and Neil Rimsky	Jeanne and Robert Rudell	Monica Sganga	Wendy Cowen-Smith and Alden Smith	Lisa and Josh Tane
Rina and Jeffrey Gitlin	Barbara and Michael Russ	Dr. Beth Scharfman-Shabto and Dr. Uri Shabto	Thomas Smithem	Joel Tankel
Joanna and Joshua Ringel	Matthew Rymer	Sharon and Robert Shacher	Leslie Smithey	Benita Taylor
Madeline Lattman Ritter	Miranda and Vincent Sabia	Robin and Paul Shainberg	Molly and Andrew Snyder	Jill Woodworth and Gavin Taylor
Gillian and Peter Rittmaster	Susan Safir	Lauren Shalem	Elizabeth and Andrew Sokol	Susie Taylor
Milagros Rivera	Judy and Kenneth Sagat	Harold Shames	Jennifer and Bart Sokol	Caitlin Teitelbaum
Susana Rivera	Raphi Salem	Sharon Shane	Sarah and William Solari	Harvey Teplitsky
Patricia and William Robbins	Pauline Salmon	Amy and Corey Shanus	Barbara and George Sommerfeld	Marsha and Harvey Tessler
Amy Harrison Robin and Frederick Robin	Bette and Richard Saltzman	Rhoda and Richard Shapiro	Jocelyn and Scott Sontag	Stephanie and Corey Tessler
Laurabeth and Rand Rodgers	Deborah Salwen	Eugenie Sharp	Shlema Sorkin. Tattiana Sartan and Boris Sorkin	David Thomas
Linda Rodman	Abby and David Salzman	Tammy and Richard Shatz	Alisa Greenspan and Frank Soroka	Elizabeth Thompson
Lisa and Andrew Rodman	Benita and Craig Samuels	Beth and David Shaw	John Sosbee	Ellen Thurm
Norma and William Rodriguez	Macheleen Sanchez	Lucyna and Daniel Shefter	Corinna Gilfillan and Andrew Spence	Suzanne Seiden and Kevin Thurm
Yolanda Rodriguez	Matthew Sandler	Shelley and Phillip Moll	Donna and Edward Spiegel	Susan and Lawrence Tolchin
Ina and Mark Roffman	Wendy and Neil Sandler	Danielle Shelov	Stephanie and Lee Spiegel	Abby and Gabriel Tolchinsky
Tobi and Martin Rogowsky	Deepka and Suraj Sani	Lauren Katzowitz Shenfield	Sharon and Matt Spielman	Judy and Arthur Topilow
Dr. Kathy Roman	Paula and Paul Santa-Donato	Leonard Sherman	Ann and Paul Spindel	Cristopher Torres
Nicole Roos	Sarah and Rich Santalone	Michele and Scott Sherman	Elana Spira	Elizabeth Torres
Roberta Roos	Hope and Mark Sarkowsky	Bina and Jonathan Shevin	Allison Spitalny Silver	Lynn and Alan Trager
Jennifer Rose	Ellen Sarna	Beverly Shipko Sloofman	Myra Kramer and Frank Spitalny	Menachem Trapedo
Felicia and Barry Rosen	Amy and David Sass	Catharine and William Shirley	Jonathan Spivak	Dr. Ruth and Dr. Eric Treiber
Gail Rosen	Joanne Ciamarella Sayer	Judy Shirley	Anne and Mitchell Stafman	Stephen Tseckares
Jennifer and Michael Rosen	Dona and Keith Schaitkin	Judith and Bertram Shlensky	Theresa Stagg	Rebecca R. Tsurumi
Joan and Seth Rosen	Susan Scharf	Sarah Shonbron	Amy and Rob Stavits	Rabbi Anne Tucker
Valerie and Robert Rosen	Edward Schechter	Mindy and Steve Shulman	Audrey Stein	Mindy Tucker
Beverly and Michael Rosenbaum	Carol and Michael Scheffler	Jonathan Shutt	Laura and Ariel Stein	Masha Turchinsky
Sandra and Dan Rosenbaum	Amy Frolick and Brad Eric Scheler	Mark Shutt	Pamela and Jon Stein	Jane and Harris Turkel
Dara and David Rosenberg	Brenda and Dr. Jonathan Scher	Shirley and Hymie Shwiel	Sharon Stein	Randi and Don Udelson
Denise and Gary Rosenberg	Robin Schlaff	Weston Siano	Sheila and Evan Steinberg	Elisabeth Bassin and Douglas Ulene
Maren Rosenberg	Robyn and Agnes Schlesinger	Ilissa and Jonathan Siegel	Mara and Brandon Steiner	Nancy Ulrich
Brian Rosenblatt	Yelena Schmidt	Joan and Alan Siegelwax	Novlette Stephenson	Luis Uriondo
Julie and Neal Rosenblatt	Emilie and Dominic Schmitt	Rebecca and Eric Sigman	Rona Sterling	Margot and William Usdan
Lillian Rosenblatt	Debbie Schnapper	Nancy and Norman Silber	Fred Stern	Daphne Uviller
Hedy Cardozo and Michael Rosenblut	Lynne Schneider	Sharon Silber	Judith and Jack Stern	Beth Roberts and Natan Vaisman
Rheba Rosenbluth	Shari and Corey Schneider	Ellen and Scott Silberstein	Marc and Andrea Stern	Shannon and Adam Van Loon
Fran and Eric Rosenfeld	Rebecca Schenker Schoffer and Jonathan Schoffer	Stacey and Jeffrey Silberweig	Mary and David Stern	Jennifer Vaughan
Halina Rosenkranz	Mark and Julia Schonfeld	Robin and Gerald Silk	Seth Stern	Jocelyn Verdi
Corinne Rosenstock	Jill Schreibman	Ann Silver and Martin Katz	Jessica Zweifach and Matthew Sternman	Anne Verrastro
Karen Rosenstock	Betty and Ira Schulman	Fiona and Steve Silver	Angie and Roy Stillman	Sharyn and Brendan Vetter
Harvey Rosenthal	Kelly Schwark	Maida Silver	Lila and Abbott Stillman	Susan Vibbert
Karen Rosenthal	Carol Schwartz	Rhoda Silverberg	Mindy Stoller	Deborah Vincent
Sarah and Jake Rosenwasser	Carol and Leonard Schwartz	Sanford Silverberg	Laura Stone	Anjali Viswanathan
Carol and Sander Ross	Jenny and Adrian Schwartz	Carol Silverman	Roberta and James Stone	Joann Vitiello
Joshua Ross	Jill and Ariel Schwartz	Caryn Silverman	Tamar Stone	Robert Voorheis and Michael Sabatino
Nina and Ivan Ross	Nancy and Ted Schwartz	Irene Kohn and Harold Silverman	Allison and Josh Strassberg	Jonathan Wagner
Pnina Ross	Sandra and Alan Schwartz	Melissa Gitelman and Steven Silverman	Barbara Lewis Kaplan and Todd Strasser	Margot Wagner
Laurie and Eric Roth	Alyce Schwebel and Sanford Schwartz	Becky and Kenneth Silverstein	Linda and Howard Strauss	Laura and Howard Waksman
Denise and Jeff Rothberg	Susan Schwartz	Allyson Simon	Henry Stroobants	Robin and Michael Wald
Diana and Michael Rothenberg	Anthony Scordino	Stephanie and David Simon	Elizabeth and Mayo Stuntz	Rochelle and Josh Waldman
Amy and Robert Rothman	Phoebe Duncan and Lisa Scott	Vikki Simon	Kevin Sullivan	Andrew Wallach
Joan and Howard Rothman	Joanna and Rich Segal	Ba-Nhi and Jack Sinclair	Susan and Steven Bloom	Jonathan Wallen
Florence Rothstein	Joanna and Rich Segal	Deborah and Matthew Sindell	Harriet and Marc Suval	Joanne Wallenstein
Iris Raylesberg and Michael Rozansky	Pam and Keith Seidman	Amy and Alan Singer		Amy Walter
Muriel and Herbert Rozansky	Donna and Darrel Seife	Cecile Singer		Amy and Jeffrey Wang
Benjamin Rozenblat	Blair and Evelyn Selber	Suellen and Howard Singer		Amy and Sheldon Weber
	Gloria Fields and Andrew Seligson	Jim Sinkoff		Stephanie and Ernie Wechsler
		Joseph Sitt		Bonnie and Douglas Weill

Franne and William Weinberg
 Judy Weinberg
 Lesley Levine and
 Edwin Weinberg
 Michael Weiner
 Barbara Weinstein
 Margot and Gary Weinstein
 Laura Platt Weinstock
 Heidi and Michael Weiss
 Monica Weiss
 Carol and Jay Weissbrot
 Bruce Werner
 Kathleen and John Wessling
 Pam and Bruce Wexler
 Philippa and Philip Wharton
 Christopher Wheeler
 Joan Wiener
 Gail and Nathan Wiesenfeld
 Marsha and Lowell Williams
 Suzanne Wilson
 Christine and Andrew Winston
 Elissa and Michael Winter
 Pamela and Martin Winter
 Regina and Eric Witkin
 Martha Dubinsky Witkowski
 Paula Markowitz Wittlin
 Alissa and Jeffrey Wolf
 Lisa Wolf
 Penelope Leins Wolf and
 Morton Wolf
 Evie and Joel Wolfson
 Abby and Michael Wolk
 Ann Carmel and
 Rabbi Daniel Wolk
 Linda and Joseph Wolk-Simon
 Joseph Scozzafava Jr and
 Billy Wong
 Emily Wood
 Carolyn and Andrew Wright
 Sharon Bassette Wu and
 Mark Wu
 Patricia and Matthew Wunder
 Beth and Nicholas Wyman
 Mary Chang and George Yankwitt
 Rochelle Yankwitt
 Suzanne and Andrew Yearley
 Lisa and Steve Yellen
 Leslie J. Yerman
 Deborah and Richard Yoken
 Sheila Yossem
 William Zangwill
 Nancy and Joseph Zaro
 Pam Eisinger Zaslav and
 David Zaslav
 Caren and Steven Zelicof
 Joy and Steven Zelin
 Hilary and Matthew Ziffer
 Nicola and Denis Ziman
 Liz and David Zimmerman
 Barry Zingman
 Joan and Larry Zombek
 Erica Cohn and Jon Zucker
 Beverly Zweiben

ORGANIZATIONS & FOUNDATIONS

ACME
 Aegon Transamerica
 Retirement Solutions
 Amalgamated Charitable
 Foundation
 Amazon Smile Foundation
 American Express Company
 American Express Company
 Employee Funds
 America's Charities
 Ardsley School District
 Arlene and Bernard Richards
 Charitable Remainder Trust
 Arnold Bortman Family
 Foundation
 AT&T
 AT&T Employee Giving Campaign
 Balyasny Asset Management L.P.
 Bauer Office Solutions
 Benevity Inc Causes
 Bet Am Shalom Synagogue
 Bet Torah, Inc.
 Bet Torah, Inc. Sisterhood
 Beth El Synagogue Center of
 New Rochelle
 Bezos Family Foundation
 Blackbaud Just Giving
 BNI Masterminds
 Bowman Family Foundation
 Brae Burn Country Club, Inc.
 Brown & Brown
 Charities Aid Foundation
 of America
 Charity On Top Foundation, Inc.
 City of New Rochelle
 Conference on Material Claims
 Against Germany, Inc
 Congregation Kol Ami
 Congregation KTI
 Congregation Shaarei Tikvah
 Cross Hill Academy School
 Cuddy & Feder, LLP
 Department of Justice (DOJ)
 Department of Planning and
 Development City of Yonkers
 Dobkin Family Foundation
 Dormitory Authority State
 of New York (DASNY)
 Epstein Teicher Philanthropies
 EXIGO LLC
 First Unitarian Soc. of West.
 Fortress Investment Group,
 FIG LLC
 Fried, Frank, Harris, Shriver
 & Jacobson LLP
 Full Moon Consulting, Inc
 Galena-Yorktown Foundation
 Galleros Robinson, CPAs LLC
 Garfunkel Wild, P.C.
 Give Lively Foundation Inc.
 GLSEN, Inc. Hudson Valley
 Google Matching Gifts Program

Grassi & Co.
 Harry Donenfeld Foundation Inc.
 Harvey & Gloria Kaylie
 Foundation Inc.
 Hendrick Hudson High School
 Henry Feil Philanthropic League
 HIP / GHI Emblem Health Services
 IBM Employees
 IBM Retiree Charitable Campaign
 Impact 100 Westchester
 Intercontinental Exchange
 c/o CyberGrants
 J.E. & Z.B. Butler Foundation
 Jackson Lewis P.C.
 Jean & Henry Pollak Fund, Inc.
 Jill E. Solomon Charitable
 Foundation
 JMT Counseling
 Joe Torre Safe At Home
 Foundation
 JP Morgan
 JP Morgan Private Banking
 Kalikow Bros. Inc.
 Karelsie Fdn.-Schweizerische
 Treuhandgesellschaft
 Ken Regan Development
 Kensico Capital
 Kroll Kids Foundation
 Kwitman Family Foundation Inc.
 Leonard Litz Foundation
 Lesbian & Gay Community
 Services
 Levene Gouldin & Thompson LLP
 Leventhal Family Foundation
 LNK Partners
 Loftex USA
 Maggie Nielsen Interiors
 Malmar Associates Corp.
 Maplebrook School, Inc
 MasterCard
 Maxx Properties/Philanthropy
 Metropolis Country Club
 MHA of Westchester
 Morgan Stanley Private
 Wealth Management
 Morris and Sylvia Trachten
 Family Foundation
 Nationwide
 Nationwide c/o CyberGrants
 Nea Enterprises
 Network For Good
 New York Presbyterian Hospital
 Westchester Division
 New York State Department
 of Health
 New York State Department of
 Homeland Security and
 Emergency Services (DHSES)
 New York State Education
 Department (NYSED)
 New York State Office for
 People with Developmental
 Disabilities (OPWDD)
 New York State Office for
 the Aging

New York State Office of Children
 and Family Services (OCFS)
 New York State Office of
 Mental Health (OMH)
 New York State Office of
 Victim Services
 Nextgen Management, LLC
 Norger Foundation
 Norman E. Alexander
 Family S Foundation
 Old Oaks Foundation
 PayPal Giving Fund
 Phelps Healthcare Foundation
 Plaza Jewish Community Chapel
 Pledgeling Foundation
 POINT Family & Friends
 Prideworks Inc.
 Rabina Properties
 Radial Theory
 Red Oak Transportation
 Regan Development
 Rising Ground Inc.
 Rockland County Department
 of Social Services (DSS)
 Rye Country Day School
 Rytes Company
 Scarsdale 10583 LLC
 Scholastic Academy for
 Academic Excellence
 Schwab Charitable Fund
 Schwab Fund for
 Charitable Giving
 Seltzer Foundation
 Spiral Giving
 St. Faith's House Foundation
 Stop & Shop
 Sucherman Consulting Group, Inc.
 Temple Beth Shalom
 Temple Israel Center of
 White Plains
 Temple Israel of Northern
 Westchester
 Temple Shaaray Tefila
 Tenshore Realty, Ltd.
 The Arie and Eva Halpern
 Family Foundation Inc
 The Arnold Foundation
 The Benevity Community
 Impact Fund
 The Blue Card, Inc.
 The Bowman Family Foundation
 The Dammann Fund, Inc.
 The Edith Glick Shoolman
 Children's Foundation
 The Edward Mensch Foundation
 The Frog Rock Foundation
 The Goldstone Fund, Inc.
 The I.W. Foundation, Inc.
 The Judith and Edwin
 Cohen Foundation
 The Krupman Family
 Foundation Inc.
 The Lesbian, Gay, Bisexual &
 Transgender Community Center

The Morris & Sylvia Trachten
 Family Foundation
 The One Good Hand Foundation
 The One Love Foundation in
 honor of Yearfield Love, Inc.
 The Pammy Fund Scholarship
 The Phyllis Backer Foundation Inc.
 The Rosenfield & Glassman
 Foundation, Inc.
 The Rosenthal Family
 Foundation, Inc
 The Seneca Group
 The Sexauer Foundation
 The STEM Alliance
 The Taft Foundation
 The Thomas & Agnes
 Carvel Foundation
 The V & L Marx Foundation
 The Warner Fund: The Joseph
 LeRoy and Ann C. Warner Fund
 The Westchester Bank
 Theodore & Renee Weiler Fdn.
 U.S. Department of Health and
 Human Services: Substance
 Abuse and Mental Health
 Services Administration
 U.S. Department of Housing
 and Urban Development (HUD)
 UJA-Federation of New York
 Valley National Bank
 Vanguard Charitable
 Veterinary Emergency Group
 Wachtell Lipton Rosen & Katz
 Warren J. & Florence
 Sinsheimer Fdn.
 Wegmans Food Markets–
 Harrison #141
 Westchester Community
 Foundation
 Westchester County Department
 of Community Mental
 Health (DCMH)
 Westchester County Department
 of Probation
 Westchester County Department
 of Senior Programs and
 Services (DSPS)
 Westchester County Department
 of Social Services
 Westchester County Office
 for Women
 Westchester County Office of
 the County Executive
 Westchester County Office of
 the District Attorney (DA)
 Westchester County
 Youth Bureau
 Westchester Jewish Center
 Westchester Jewish Council
 Westchester Reform Temple
 White Plains Hospital
 Wiener Family Philanthropy
 Yonkers Public Schools
 YourCause MasterCard
 Zaslav Family Foundation
 Zion Episcopal Church

FAST FACTS



MENTAL HEALTH

WJCS, the largest not-for-profit provider of licensed, community-based outpatient mental health services in Westchester, offers evidence-based treatment to thousands of individuals of all ages struggling with depression, anxiety, ADHD, and other mental health challenges.

TRAUMA

The renowned WJCS Trager Lemp Center for Treating Trauma & Promoting Resilience provides trauma treatment and resilience-building programs to adult and child survivors of sexual abuse and domestic and community violence as well as individuals who have suffered from other traumatic experiences.

INTELLECTUAL AND DEVELOPMENTAL DISABILITIES

WJCS offers individuals with intellectual and developmental disabilities, including those on the autism spectrum, social activities, skill-building classes, emotional support services, and community residences.

CHILDREN, YOUTH, AND FAMILIES

WJCS provides “cradle to college” programming, including early literacy, after-school enrichment, and violence prevention and anti-bullying education.

OLDER ADULTS

WJCS senior services support older adults, allowing them to age safely and well in their homes and communities, whenever possible.

JEWISH COMMUNITY

WJCS is the 4-1-1 and 9-1-1 for the Westchester Jewish community. Jewish programming includes education, information, social activities, spiritual healing, and support to synagogues, day schools, nursery schools, assisted living centers, Holocaust survivors and their families, and to those needing help in a crisis.

W wellness
welcoming
warm-hearted
J joy
joyful
community
cheer
consolation
calm
considerate
C caring
connection
commitment
compassionate
S consolation
steadfast
spirit
supportive
solace
strength



WWW.WJCS.COM

845 N. Broadway White Plains, NY 10603

914-761-0600

